

Print Data with Scanning Suite 4.0

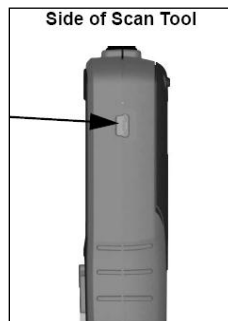
Note: Scanning Suite 4.0 should already be installed on the PC. If it is not, download and install onto your PC from www.registtermymatcotools.com.

Prepare the MD1400 Scan Tool

1. Scan vehicle and view / record desired information (see User Manual for additional instructions regarding using the scan tool).
2. Disconnect the Scan Tool from the vehicle.
3. In the **Main Menu** or **Diagnostic Menu**, arrow down to **Print Data** and press **ENTER**. The tool will display *Launch PC Printing Software Application*.



4. Plug the tool into the PC via the USB port.

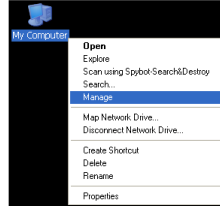


Note: The PC will recognize the tool and assign it a Virtual COM Port. It is necessary to know this COM port number to use the Print Data function.

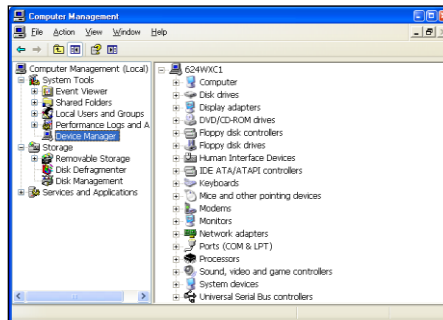
Determine the Virtual COM Port number

5. To determine the assigned COM port number, open Windows **Device Manager**.

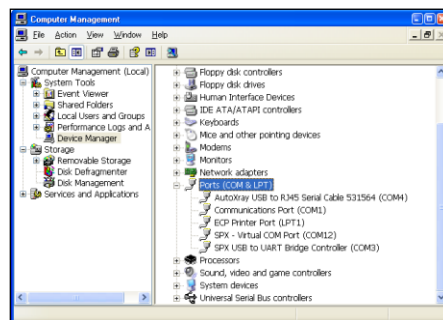
a. Right click on the **My Computer** icon and click **Manage**.



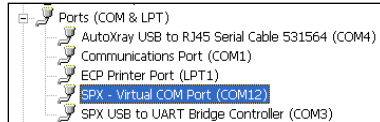
b. In the left column of the Computer Management window, click **Device Manager**.



c. In the right column of the Computer Management window, open the **Ports (COM & LPT)** icon.

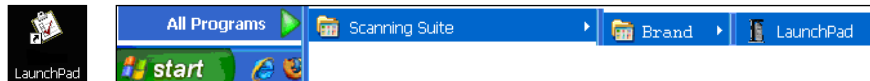


d. The Scan Tool will be labeled as **SPX – Virtual COM Port** and the COM Port number will be in parenthesis next to it. Remember this number or write it down for later use.

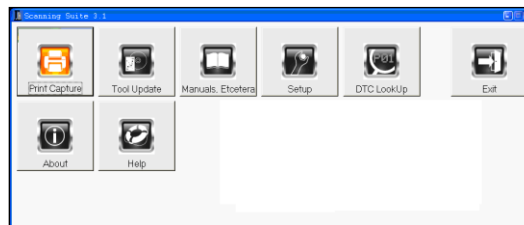


Connecting the OBD II & ABS Scan Tool

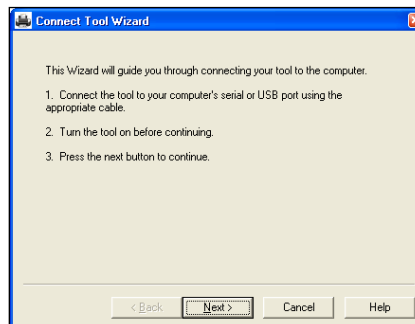
6. Open Scanning Suite on the PC by double clicking the **LaunchPad** shortcut or clicking **start/All Programs/Scanning Suite/Matco/LaunchPad**.



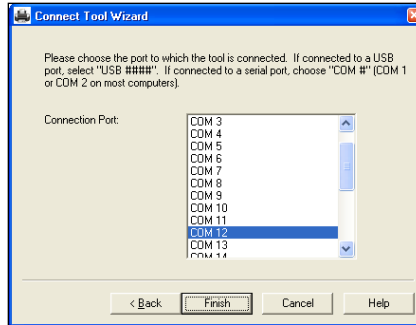
7. Click **Print Capture** and the Connect Tool Wizard will appear.



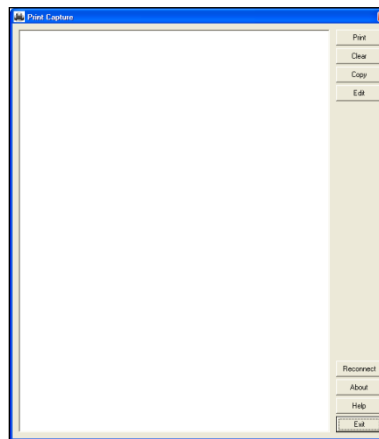
8. Click **Next**.



9. Select the appropriate COM Port number assigned by the PC and click **Finish**.

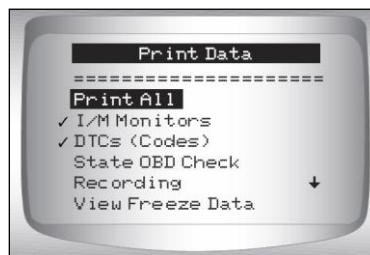


10. A blank Print Capture screen will appear and it is now ready to receive data from the MD1400 Scan Tool.



Transfer the Stored Data to the PC

11. On the Scan Tool, press **ENTER** to continue to the Print Data menu.



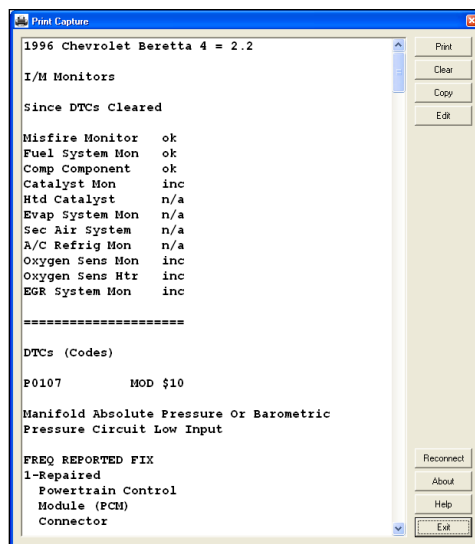
To select the data to send to the PC, use the **UP** or **Down** button and press **ENTER** on the desired information. The Scan Tool will display *Sending Data via USB Port*

Print All will send all of the data stored on the Scan Tool to the PC.

When printing a Recording, the Start Frame and End Frame need to be defined.

Note: The Print Data menu shows a check mark next to the items that have data. If there isn't a check mark next to the item, then this item cannot be selected until the appropriate function is run from the Diagnostic Menu when connected to a vehicle.

12. The data will appear in the Print Capture screen.



13. In the right column of the Print Capture window, there are different command buttons:

- a. **Print** will send the data to your printer.
- b. **Clear** will erase all of the contents in the Print Capture window. This will not erase the information stored in the tool.
- c. **Copy** will copy all of the contents in the Print Capture window to the clipboard. Then it can easily be pasted in a program of your choice.
- d. **Edit** will open the context in the Print Capture window in Notepad, where the text can be edited.
- e. **Reconnect** will allow you to restart the Connect Tool Wizard (step 8).
- f. **About** will display the version of Print Capture.
- g. **Help** will open the Scanning Suite Help menu.
- h. **Exit** will close the Print Capture application.

14. When finished, click **Exit** to close the Print Capture application. Then disconnect the Scan Tool USB cable and power the tool off.

© 2013 Service Solutions LLC.
All rights reserved.