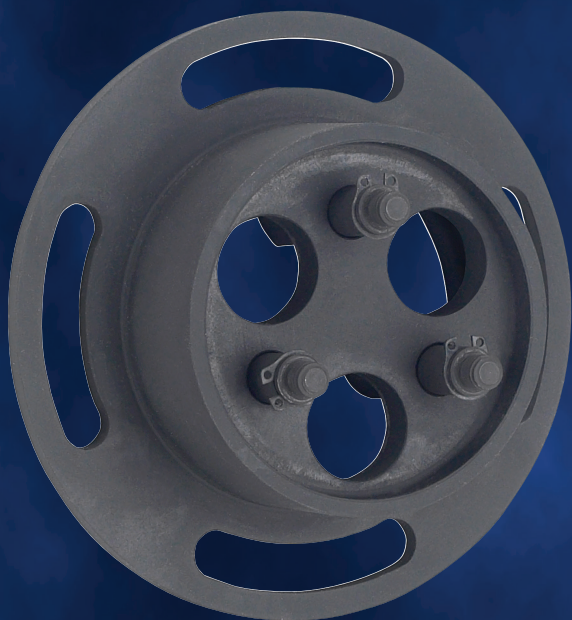
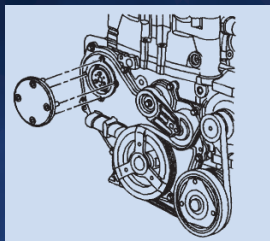


GM Water Pump Holding Tool

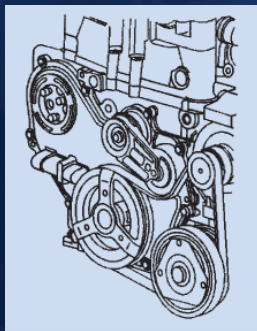
6616



6616



Removing access plate.



6616 installed.

- Holds timing chain in place so water pump can be removed for service.
- Special design allows easy installation regardless of timing chain orientation.
- Simply remove access plate from front cover and install the tool.
- Tool saves costly loss of timing on 2002–2008 GM 2.2L and 2.4L EcoTech motors found in Chevrolet, Oldsmobile, Pontiac, and Saturn platforms.

No. 6616 – GM water pump holding tool.
Wt., 10 oz.

Application GM EcoTech

2.2 Engine Code F

2002 – 2005 Chev Cavalier
2005 – 2008 Chev Cobalt
2003 – 2008 Chev Malibu
2002 – 2004 Olds Alero
2002 – 2005 Pontiac Sunfire
2007 – 2008 Pontiac G5
2002 – 2005 Pontiac Grand Am
2002 – 2006 Saturn Vue
2003 – 2007 Saturn Ion
2000 – 2005 Saturn L series

2.4 Engine Code B

2005 – 2008 Chev Cobalt
2005 – 2007 Chev HHR
2004 – 2008 Chev Malibu
2006 – 2008 Pontiac G6
2006 – 2007 Pontiac Pursuit
2006 – 2008 Pontiac Solstice
2007 – 2008 Saturn Aura
2006 – 2007 Saturn Ion
2007 – 2008 Saturn Sky

08-110 ©2008 All rights reserved. Because of ongoing product improvements, we reserve the right to change design, materials, and specifications without notice. Certain kits may require additional cables or adapters. Product shipped may differ from photo(s) shown.