



655 Eisenhower Drive
 Owatonna, MN 55060 USA
 Phone: (507) 455-7000
 Tech. Serv.: (800) 533-6127
 Fax: (800) 955-8329
 Order Entry: (800) 533-6127
 Fax: (800) 283-8665
 International Sales: (507) 455-7223
 Fax: (507) 455-7063

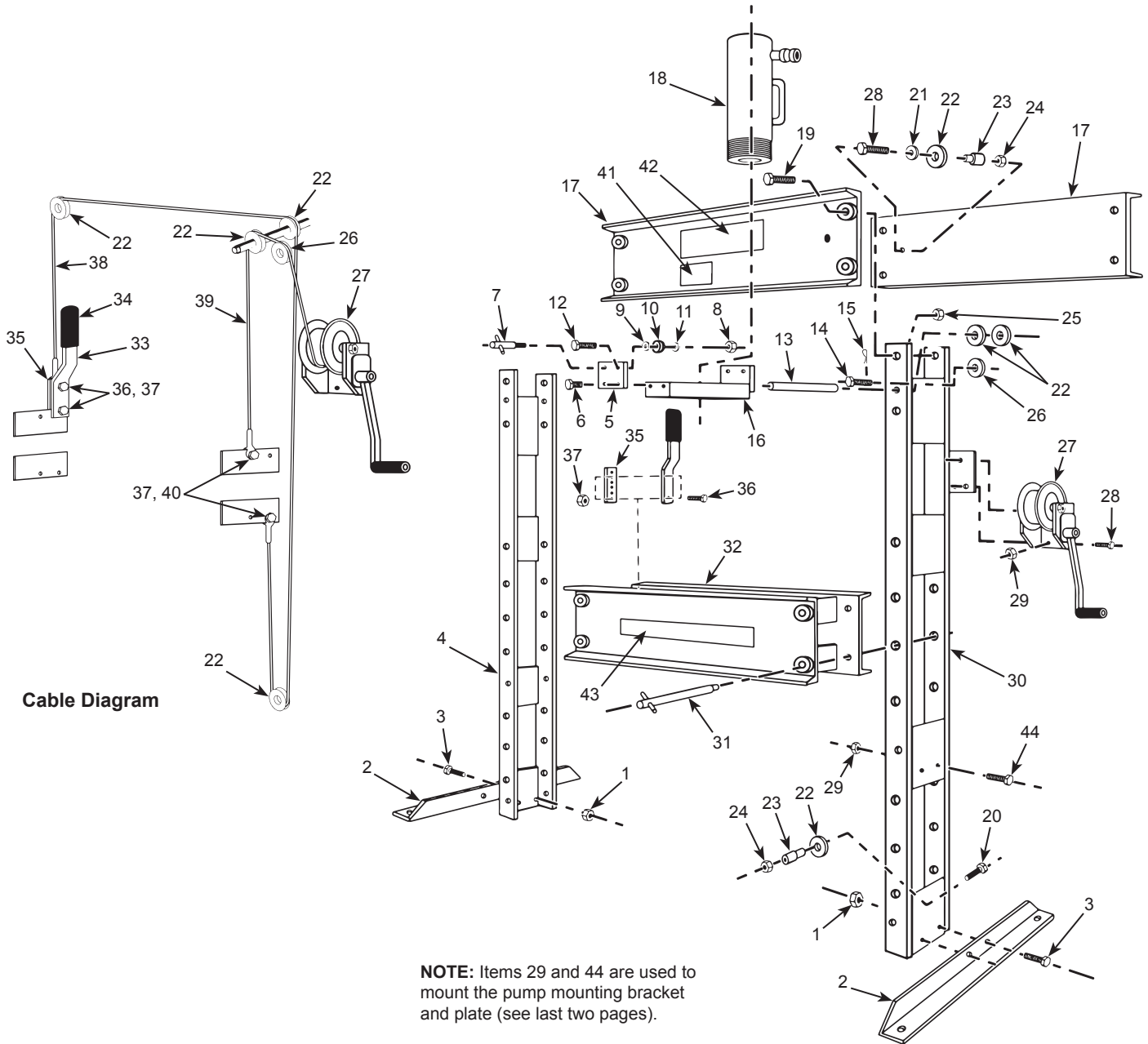
Form No. 100546

Parts List for:

1845
 1846A
 1847
 1872
 1872-220V

Hydraulic Shop Press

Maximum Capacity: 55 Tons



Item No.	Part No.	No. Req'd	Description
-	576780	1	Press Frame (Complete frame only.)
1	10216	4	Hex Nut (3/4-10 UNC)
2	25849	2	Press Foot
3	10119	4	Hex Hd. Cap Screw (3/4-10 UNC x 1-3/4 in. lg.)
4	42471	1	Left-hand Upright
5	202496	2	Plate
6	10079	4	Hex Hd. Cap Screw (1/2-13 UNC x 1 in. lg.)
7	25825	2	Adjusting Screw
8	10208	4	Hex Nut (1/2-13 UNC)
9	12004	12	SAE Washer (1/2 in. bolt) (Note: Use two washers per roller. Add/subtract washers to adjust roller engagement with upper bolster.)
10	202498	4	Roller
11	202497	4	Bushing
12	12896	4	Hex Hd. Cap Screw (1/2-13 UNC x 2-1/4 in. lg.)
13	202490	1	Pulley Axle
14	16654	1	Clevis Pin (3/4 in. dia. x 2 in. lg.)
15	10472	1	Cotter Pin
16	50954	1	Ram Mounting Plate
17	33328	2	Upper Bolster
18	52380A	1	Single-acting Cylinder (For 1847 & 1845)
	65458	1	Single-acting Cylinder (For 1846A)
	51682	1	Double-acting Cylinder (For 1872 & 1872-220V)
19	12697	8	Hex Hd. Cap Screw (1-8 x 3 in. lg.)
20	10089	2	Hex Hd. Cap Screw (1/2-13 x 2-1/2 in. lg.)
21	12004	1	SAE Washer (1/2 in. bolt)

Item No.	Part No.	No. Req'd	Description
22	16659	4	Pulley (3 in. dia.)
23	202468	2	Spacer
24	15013	2	Locknut (1/2-13 UNC)
25	10221	8	Hex Nut (1-8 UNC)
26	16653	1	Pulley (2-1/2 in. dia.)
27	18895-1	1	Winch
28	10049	3	Hex Hd. Cap Screw (3/8-16 UNC x 1 in. lg.)
29	10204	5	Hex Nut (3/8-16 UNC; For 1845 & 1846A. NOTE: Two for mounting plate; Three for winch.)
	10204	3	Hex Nut (3/8-16 UNC; For 1847)
	10204	7	Hex Nut (3/8-16 UNC; For 1872 & 1872-220V)
30	42470	1	Right-hand Upright
31	25846	4	Pin Assembly
32	51536	1	Lower Bolster
33	38579	1	Handle
34	17241	1	Handle Grip
35	201929	1	Cable Adjuster Strap
36	10017	2	Hex Hd. Cap Screw (1/4-20 UNC x 1 in. lg.)
37	12809	4	Locknut (1/4-20 UNC)
38	202483	1	Press Cable
39	204728	1	Winch Cable
40	10019	2	Hex Hd. Cap Screw (1/4-20 UNC x 1-1/4 in. lg.)
41	206043	1	Instruction Decal
42	304984	1	Trade Name Decal
43	46896	1	Warning Decal
44	10052	2	Hex Hd. Cap Screw (3/8-16 UNC x 1-1/4 in. lg.; For 1845 & 1846A)
	10052	4	Hex Hd. Cap Screw (3/8-16 UNC x 1-1/4 in. lg.; For 1872 & 1872-220V)



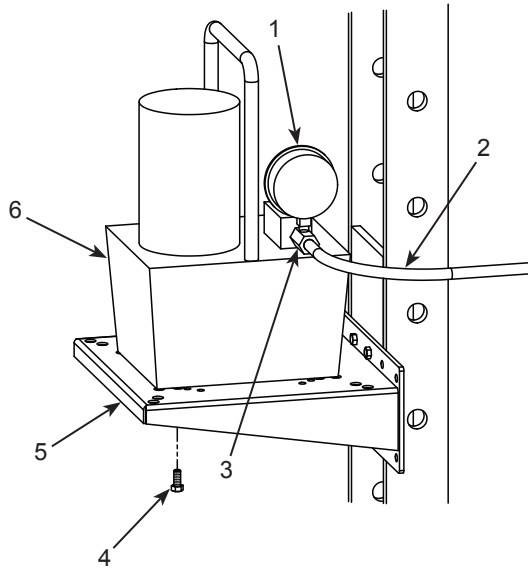
Get parts at OTCparts.com

This document contains product parts lists and information regarding operation and maintenance. Items listed in the parts list have been carefully tested and selected by OTC. Therefore, use only OTC replacement parts.

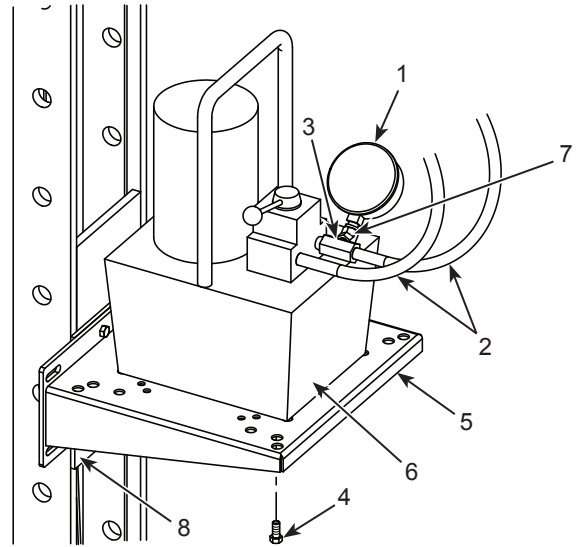
Product questions may be directed to the OTC Technical Service Department at (800) 533-6127.

Electric Pump

(Used on 1845, 1872, & 1872-220V)



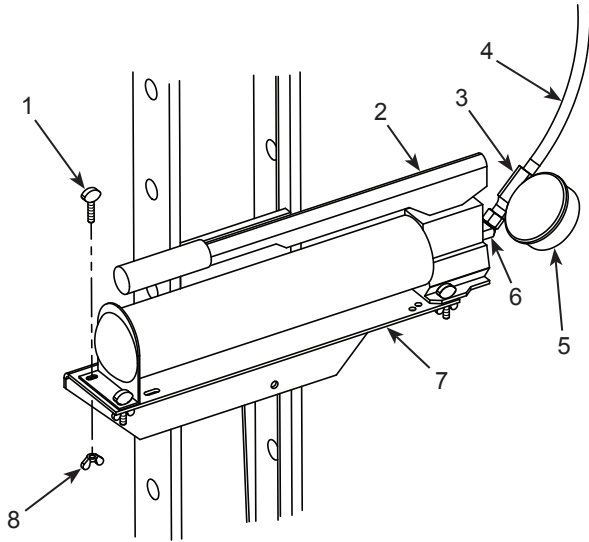
1845



1872 & 1872-220V

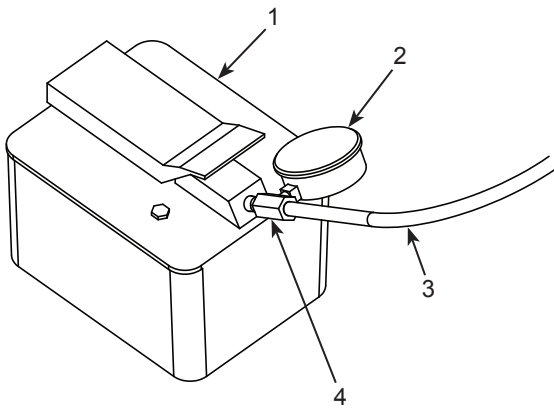
Item No.	Part No.	No. Req'd	Description
1	10492	1	Gauge
2	303563	1	Hydraulic Hose (For 1845)
	36887	2	Hydraulic Hose (For 1872 & 1872-220V)
3	24815	1	Tee Adapter
4	10048	4	Hex Hd. Cap Screw (3/8-16 UNC x 7/8 in. lg.)
5	50931	1	Pump Mounting Bracket
6	4044	1	Electric Pump (For 1845)
	4046	1	Electric Pump (For 1872)
	4046-50-220	1	Electric Pump (For 1872-220V)
7	10645	1	45° Elbow
8	44733	1	Plate

Hand Pump
(Used on 1846A)



Item No.	Part No.	No. Req'd	Description
1	12680	3	Thumb Screw
2	4016	1	Hand Pump
3	24815	1	Tee Adapter
4	303563	1	Hydraulic Hose
5	10492	1	Gauge
6	10648	1	45° Elbow
7	42733	1	Pump Mounting Bracket
8	10590	3	Wing Nut

Air Pump
(Used on 1847)



Item No.	Part No.	No. Req'd	Description
1	4022	1	Air Pump
2	10492	1	Gauge
3	36888	1	Hydraulic Hose
4	24815	1	Tee Adapter