



SPX Corporation
 655 Eisenhower Drive
 Owatonna, MN 55060-0995 USA
 Phone: (507) 455-7000
 Tech. Serv.: (800) 533-6127
 Fax: (800) 955-8329
 Order Entry: (800) 533-6127
 Fax: (800) 283-8665
 International Sales: (507) 455-7223
 Fax: (507) 455-7063

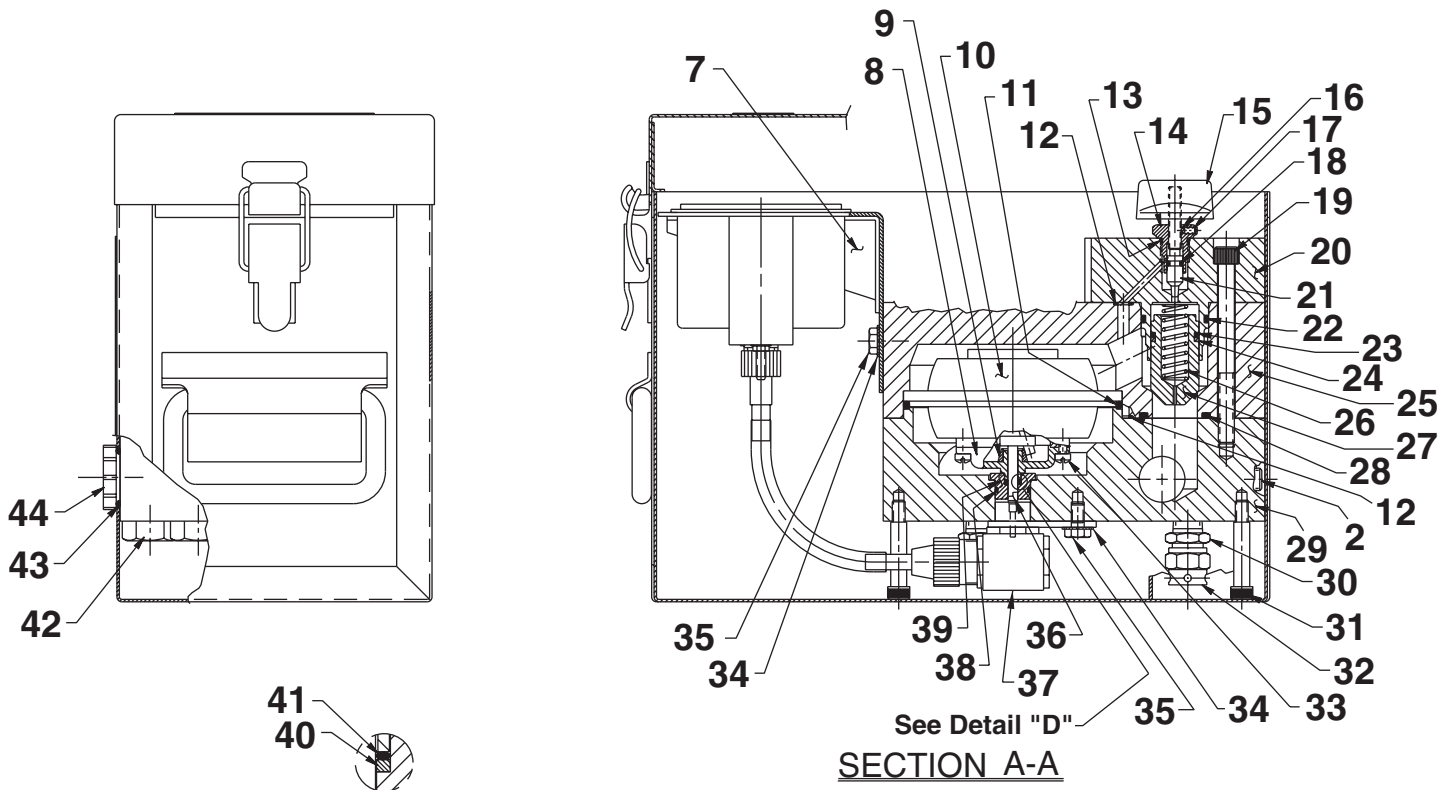
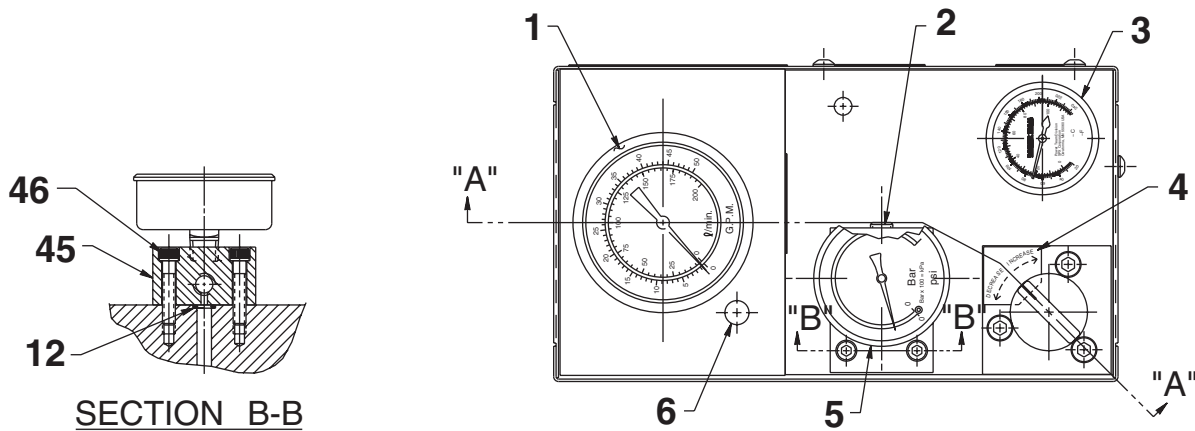
Form No. 101719

Parts List for:

4235

MODEL C 50 GPM HYDRAULIC TESTER

BASIC ASSEMBLY



Sheet No. 1 of 2

Rev 2 Date: 10 Feb 2005

Parts List, Form No. 101719, Back sheet 1 of 2

Item No.	Part No.	No. Req'd	Description	Item No.	Part No.	No. Req'd	Description
1	213628	1	Tachometer	26	10367	1	Compression Spring (1/2 O.D. X 2" Lg.)
2	10427	2	Plug Fitting (1/8 NPTF)	27	25559	1	Poppet
3	11490	1	Temperature Gauge (2" dia.)	28	10280	1	O-ring (1-3/8 X 1-1/8 X 1/8)
4	12656	1	Decal (Increase/Decrease)	29	50309	1	Lower Body
5	17967	1	Gauge (1-6,000 PSI; 2-1/2" dia.)	30	21837	2	Nipple
6	205521	1	Plug Cap	31	252248	3	Screw
7	34117	1	Panel	32	16230	2	Safety Disc Valve (5,835 PSI; Torque to 25/32 ft. lbs.)
8	23023	1	Gear Plate	33	13441	2	Screw (#10-32 X 1/4 Lg.)
9	13440	1	Roller	34	11351	3	Washer (1/4 External Tooth)
10	11489	1	Measuring Chamber	35	10005	3	Cap Screw (1/4-20 UNC X 1/2 Lg.)
11	12599	1	O-ring (4-1/4 X 4" X 1/8)	36	351296	1	Drive Shaft
12	10266	3	O-ring (3/8 X 1/4 X 1/16)	37	351299	1	Gear Drive (Note: Grease with Mobile Mobilegrease HP; See note below)
13	10300	1	O-ring (5/8 X 15/32 X 5/64)	38	11284	1	O-ring (11/16 X 9/16 X 1/16)
14	26571	1	Tapped Guide	39	25564	1	Shaft Seal
15	12721	1	Instrument Knob	40	12556	1	Teflon Seal Ring
16	24463	1	Nylon Insert	41	12557	1	O-ring (11/32 X 7/32 X 1/16)
17	10587	1	Set Screw (#8-32 X 3/16 Lg.)	42	12720	5	Cap Screw (5/8-11 X 2-3/4 Lg.; Torque to 90/110 ft. lbs.)
18	10265	1	O-ring (5/16 X 3/16 X 1/16)	43	12745	2	O-ring (1-5/32 X .924 X .116)
19	11030	3	Screw (5/16-18 X 3-1/2 Lg.)	44	11105	2	Plug Fitting
20	32439	1	Flow Control Body	45	46707	1	Gauge Manifold Body
21	25738	1	Regulator Valve	46	10020	2	Cap Screw (1/4-20 UNC X 1-1/4 Lg.)
22	12598	1	O-ring (1-5/16 X 1-1/8 X 3/32)				
23	10275	1	O-ring (15/16 X 3/4 X 3/32)				
24	14489	1	Backup Washer (15/16 X 3/4 X .048)				
25	50308	1	Upper Body				

Part numbers marked with an asterisk (*) are included in Repair Kit No. 300097.

Note: To order the flex drive portion only of this drive gear, order no. 252245.

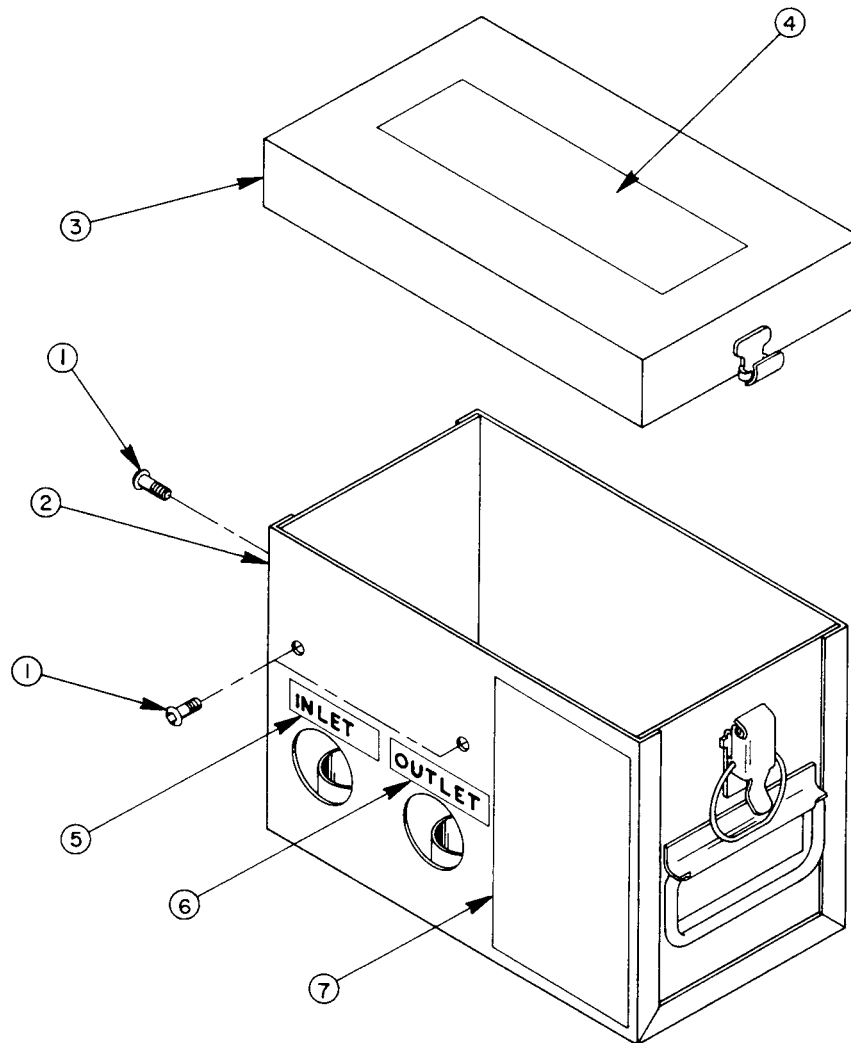
Note: Shaded areas reflect last revision(s) made to this form.

Refer to any operating instructions included with this product for detailed information about operation, testing, disassembly, reassembly, and preventive maintenance.

Items found in this parts list have been carefully tested and selected. **Therefore: Use only genuine replacement parts!**

Additional questions can be directed to one of our Technical Services Departments.

HOUSING ASSEMBLY



Item No.	Part No.	No. Req'd	Description
1	15911	3	Cap Screw (1/4-20 X 5/8 Lg.)
2	50340BK2	1	Case
3	40844WH2	1	Cover
4	351318	1	Trade Name Decal
5	*207804	1	Decal
6	*207805	1	Decal
7	307363	1	Instruction Decal

Part numbers marked with an asterisk (*) are included in Repair Kit No. 300097.