



655 Eisenhower Drive  
 Owatonna, MN 55060 USA  
 Phone: (507) 455-7000  
 Tech. Serv.: (800) 533-6127  
 Fax: (800) 955-8329  
 Order Entry: (800) 533-6127  
 Fax: (800) 283-8665  
 International Sales: (507) 455-7290  
 Fax: (507) 455-7063

Form No. 102305

**Application Charts &  
 Installation Instructions**

for:

205059

Cummins Diesel  
**Mounting Plate Application Charts**  
 (for OTC #1750A Diesel Engine Repair Stand)

Mounting Plate No.	Used On
205059	NH, NTC, NTE 855 Series Inline 6 378 Series V6 & L10 6 Cyl. 504, 555, & 903 Series V8 KT 1150 Series Inline 6

**INSTALLATION INSTRUCTIONS**

1. Bolt the mounting plate to the engine as shown in one of the following application charts.
2. Find the engine's center of balance (or greatest concentration of weight). **NOTE: This is usually about two inches above the center of the crankshaft.** See Figure 1.
3. Attach side plates to the engine mounting adapter plate, but leave the cap screws and nuts loose.
4. Align the engine (with side plates attached to the adapter plate) with the universal mounting adapter plate. Raise or lower the engine until its center of balance is in-line with the rotating shaft of the engine stand.
5. Align the closest tapped holes in the universal mounting adapter plate with the holes in the side plates. Securely tighten the side plates to the engine mounting plate and to the universal mounting adapter plate on the engine stand.

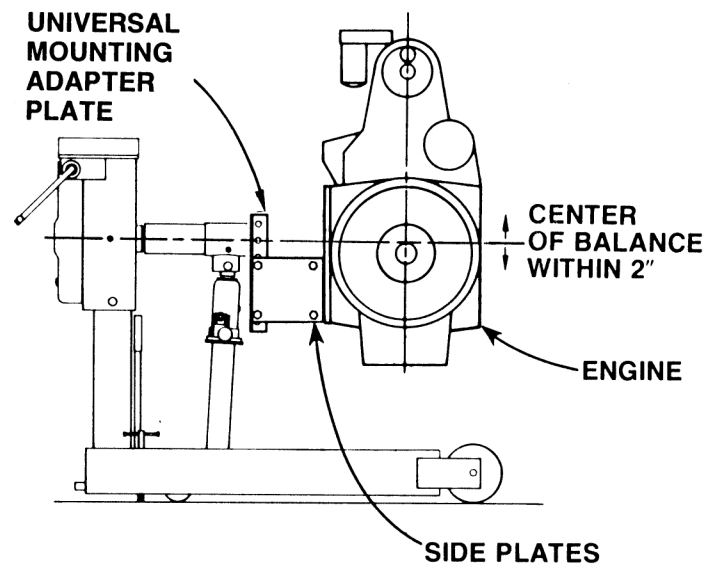


FIGURE 1

**Fasteners:**

Item	Description	Qty.	Part #
CAP SCREWS	3/8-16 UNC x 1-1/4" Lg.	7	19828
	1/2-13 UNC x 3-1/2" Lg.	2	18213
	M10 x 1.5 6g x 35mm Lg.	9	206158
WASHERS	3/8" Bolt Size	9	10231
	1/2" Bolt Size	2	10586
SPACERS	1-1/4" O.D. x 21/32" I.D. x 1-11/16" Lg.	2	205107



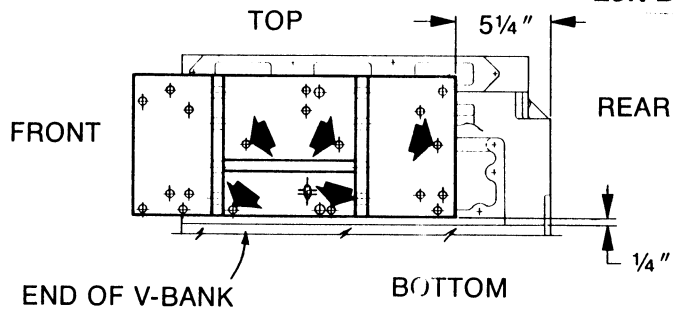
**WARNING:**

To help prevent personal injury,

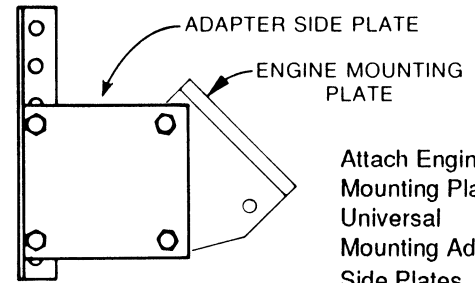
- All mounting screws and bolts **MUST** be tight before starting work on the engine.
- Use only SAE Grade 8 (or Metric Grade 10.9) cap screws to mount the plate to the engine and to the engine repair stand.

**MODEL 378 SERIES V6**

**Left Bank of Block**



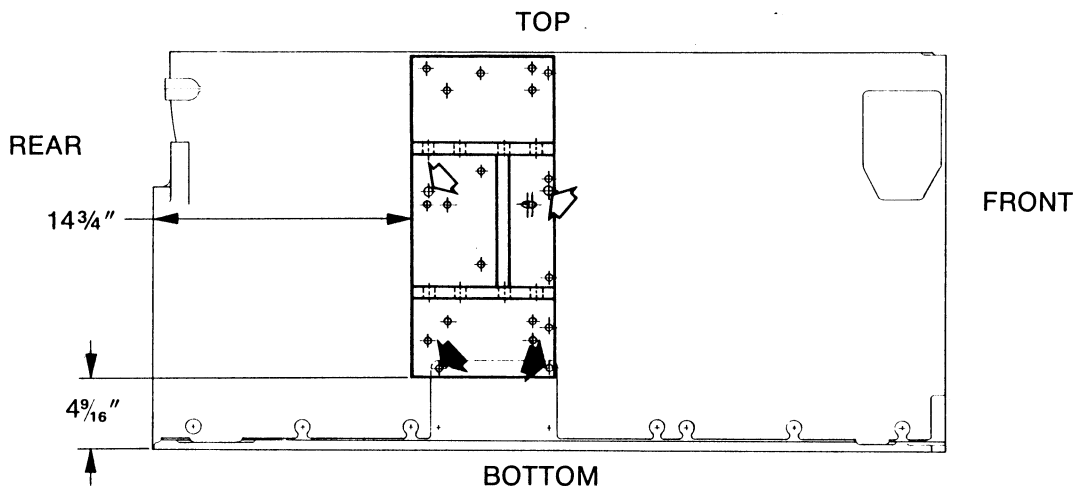
- (5)  $\frac{3}{8}$ -16 UNC  $\times$  1 1/4" Lg. Cap Screw, Grade 8
- (5)  $\frac{3}{8}$ " Washer



**FIGURE 2**

**MODEL 855 SERIES INLINE 6**

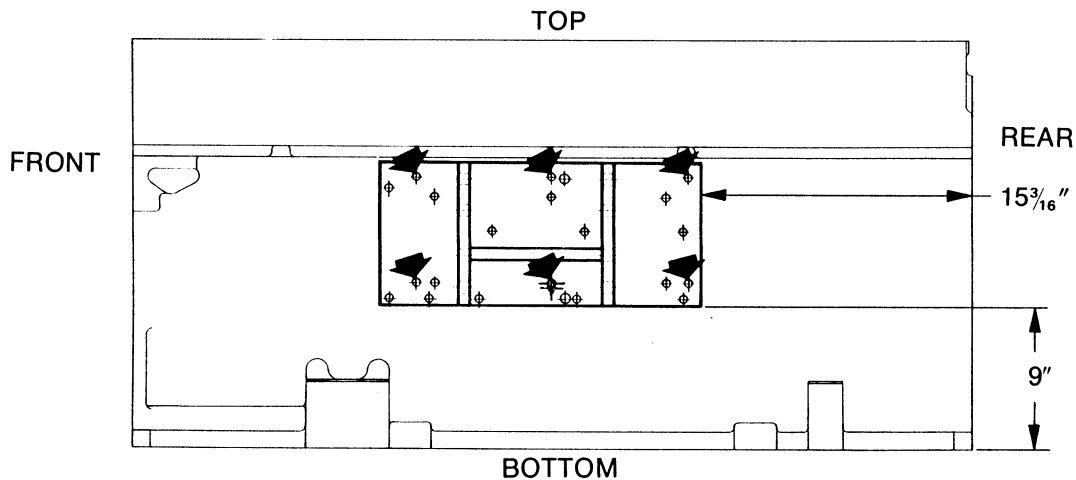
**Right Side of Block**



- (2)  $\frac{3}{8}$ -16 UNC  $\times$  1 1/4" Lg. Cap Screw, Grade 8
- (2)  $\frac{3}{8}$ " Washer
- (2)  $\frac{1}{2}$ -13 UNC  $\times$  3 1/2" Lg. Cap Screw, Grade 8
- (2)  $\frac{1}{2}$ " Washer
- (2) 1 1/16" Lg. Spacer

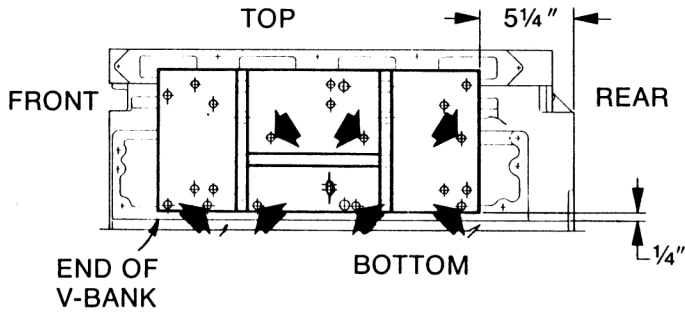
**MODEL KT 1150 SERIES INLINE 6**

**Left Side of Block**



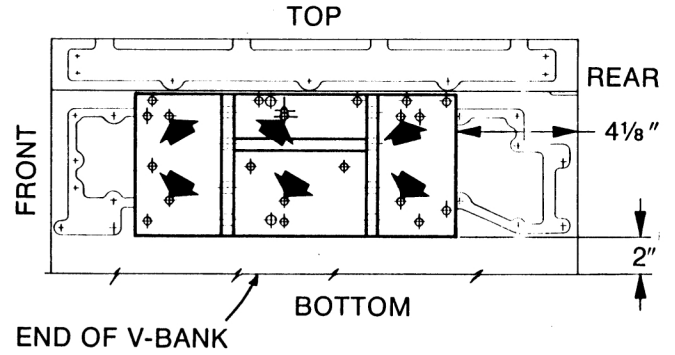
- (6)  $\frac{3}{8}$ -16 UNC  $\times$  1 1/4" Lg. Cap Screw, Grade 8
- (6)  $\frac{3}{8}$ " Washer

**MODELS 504 & 555 SERIES V8**  
 Left Bank of Block  
 (See Figure 2)



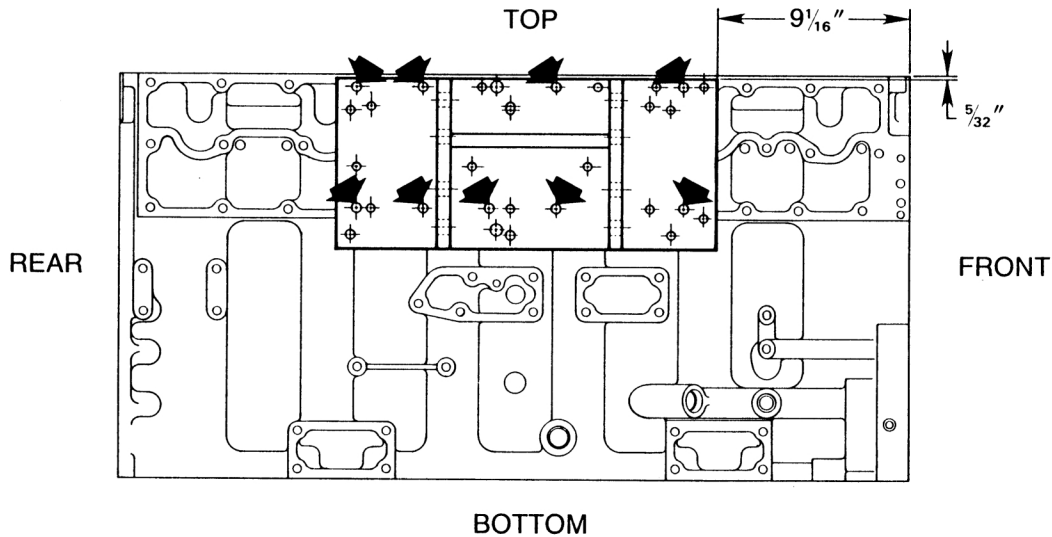
- ▶ (7) 3/8-16 UNC × 1 1/4" Lg. Cap Screw, Grade 8
- (7) 3/8" Washer

**MODEL 903 SERIES V8**  
 Left Bank of Block  
 (See Figure 2)



- ▶ (6) 3/8-16 UNC × 1 1/4" Lg. Cap Screw, Grade 8
- (6) 3/8" Washer

**MODEL L10 - 6 CYLINDER**  
 Right Bank of Block



- ▶ (9) M10 × 1.5 6g × 35 mm Lg. Cap Screw, Grade 10.9
- (9) 3/8" Washer