

## 15349/15465/15665 REPLACEMENT MOTOR AND HANDLE ASSEMBLY FOR 15301/15401/15601 VACUUM PUMPS

### ⚠ WARNING ⚠



Always wear safety goggles when working with refrigerants. Contact with refrigerant can cause eye injury.



Unplug the unit before beginning any service work. Improper use or connections can cause electrical shock.

Follow these procedures to replace the motor and handle assembly in your VacuMaster™ vacuum pump. The numbers shown in parentheses in the instructions correspond to the callouts in the drawings.

1. Disconnect the power cord from the AC power line.
2. Unthread, but do **not** remove, the handle bolt (1) from the pump handle.
3. Turn the pump on its nose, and remove the base (2).
4. Loosen the four clamp bolts (3), and remove the motor and handle assembly (4).
5. Remove the bottom O-ring from the handle bolt (1), and using a rotating motion, pull the bolt from the handle (5).
6. Remove the half coupler still attached to the pumping module, and discard the coupler along with the rubber spider.
7. Assemble the new coupler (6) and Woodruff key (7) to the pumping module. Position the new rubber spider (10) in the coupler (6).
8. Assemble the new O-rings (8) to the handle bolt (1). Lubricate the new O-rings with a small amount of vacuum grease or clean vacuum pump oil.
9. Install the new motor and handle assembly (4) on the pumping module, and tighten the clamp bolts (3).
10. Adjust the new couplers (6) so that they are approximately  $\frac{1}{16}$ " to  $\frac{1}{8}$ " apart from each other.

Continued 

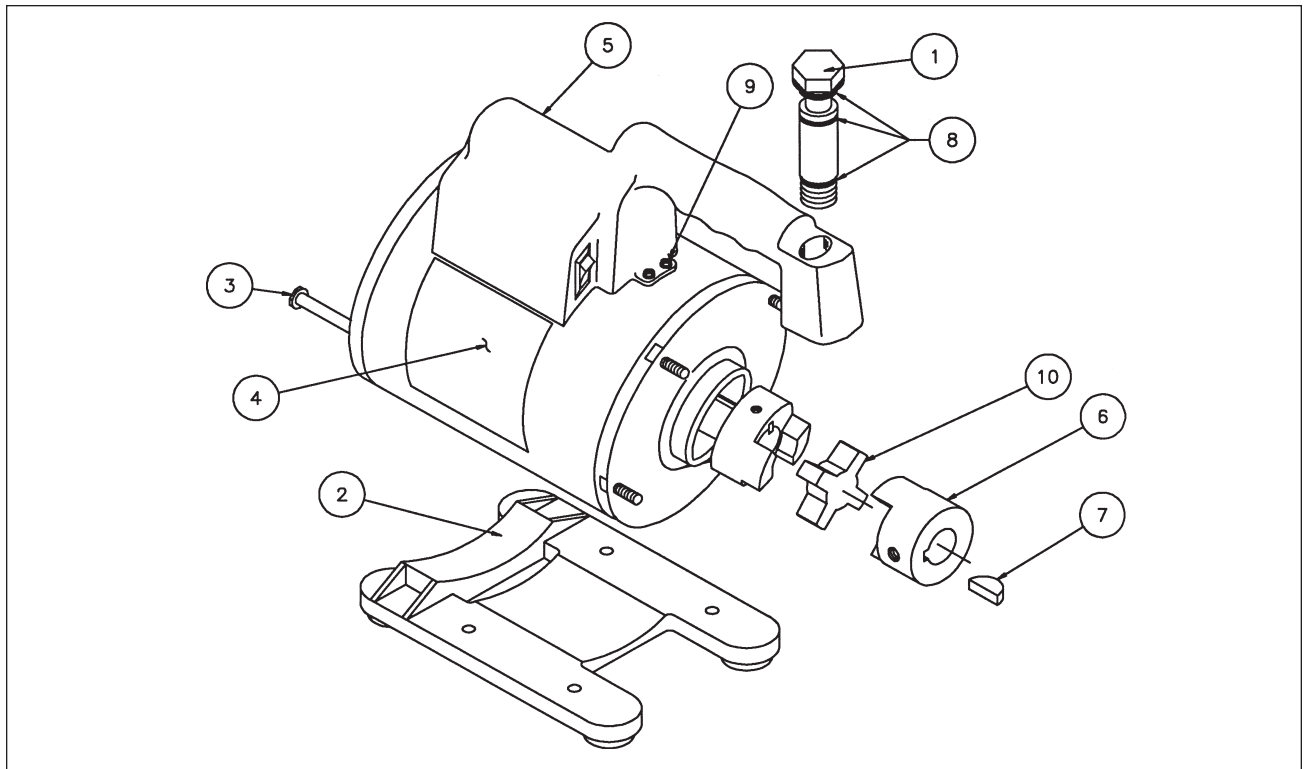
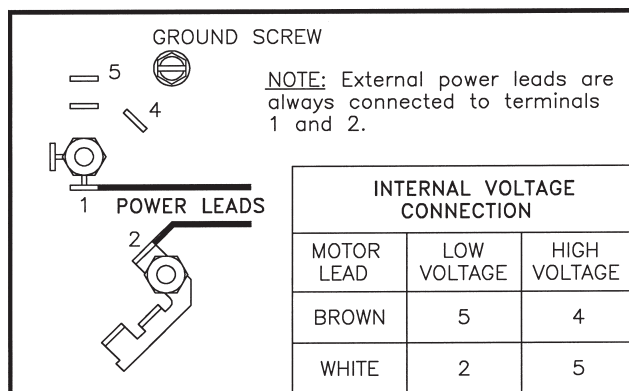


Diagram of Motor and Handle Assembly

11. Re-install the base (2).
12. Set the pump upright, and loosen the four handle screws (9).
13. Using a rotating motion, assemble the handle bolt (1) in the handle (5).

**CAUTION:** Align the handle bolt carefully. Do *not* cross-thread. Any resistance to rotation indicates cross-threading — stop immediately and thread correctly.

14. *Carefully* thread the handle bolt (1) into the pump housing. Tighten the bolt snugly, but do not overtighten.
15. Tighten the four handle screws (9).
16. Install the proper AC plug on the stripped and tinned power cord.
17. Apply the appropriate decal for your vacuum pump model to the motor.



*Wiring Diagram*

**Note:** *Robinair motors come from the factory wired for high voltage (220 to 250 volts). To wire your pump for low voltage (110 to 115 volts), use the chart above.*



*For more information call toll-free 1-800-822-5561. In all other locations, contact your local distributor.*

Because of ongoing product improvements, we reserve the right to change design, specifications, or materials without notice.

# ROBINAIR®

655 Eisenhower Drive  
 Owatonna, MN 55060 USA  
 Technical Services: 1-800-822-5561  
 Fax: 1-866-259-1241  
 Customer Service: 1-800-533-6127  
 Fax: 1-800-322-2890  
 Web Site: [www.robinair.com](http://www.robinair.com)