

# Highlights of ESI[truck] North America



## ESI[truck] North America

### Heavy & Medium Duty Functions

- ▶ Read/Clear Codes
- ▶ Calibrations
- ▶ Diagnostics
- ▶ Track Service Schedules
- ▶ Data Stream
- ▶ Component Technical Data
- ▶ Actuators and Tests
- ▶ Wiring Diagrams
- ▶ System Data
- ▶ Repair Reports
- ▶ Parameter Settings
- ▶ Repair Information

### Plus OBD Scan for Pick-Up Trucks



### Bosch ESI[truck] Trailer Adapter 3824-06

### 7-pin PLC adapter for trailer ABS diagnostics

- ▶ J2497 Power Line Carrier (PLC) communication compatible
- ▶ Allows direct connection to trailer
- ▶ Works with tractor present or without the tractor present
  - External power supply is necessary without tractor
- ▶ Bosch ESI[truck] trailer ABS coverage for Bendix, Haldex, Meritor Wabco and Wabash systems



### Bosch ESI[truck] License Renewal 3824-08

- ▶ 12-Month Security Card



### The Most Complete HD Diagnostic Coverage In North America Including:

#### Trucks

- ▶ Freightliner
- ▶ International
- ▶ Kenworth
- ▶ Mack (New +2014 Communication)
- ▶ Volvo (New +2014 Communication)
- ▶ Peterbilt
- ▶ Sterling
- ▶ Western Star
- ▶ MD Trucks
  - Freightliner Sprinter Van
  - Isuzu
  - GM
  - Ford

#### Engines

- ▶ Cummins
- ▶ Caterpillar
- ▶ Detroit Diesel-MBE
- ▶ Volvo
- ▶ Mack
- ▶ Navistar
- ▶ PACCAR
- ▶ Perkins
- ▶ Deutz
- ▶ MTU

#### Additional Coverage

- ▶ Trailer ABS Controllers
- ▶ Transmission
  - Allison
  - Eaton



15-88 Rve: BESI[truck]

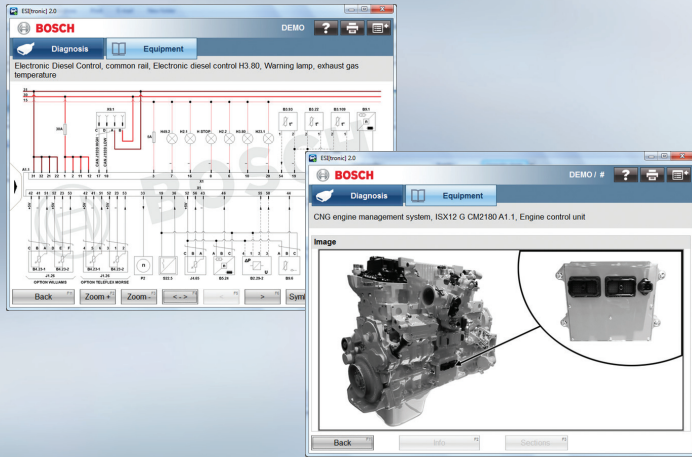
## ESI[truck] North America News 2015/3



### 3824 ESI[truck] - Latest Release 2015/3 Updated HD Coverage

- ▶ 24 New Makes
- ▶ +300 New Models
- ▶ +1,500 New Systems
- ▶ +1,400 New Wiring Diagrams

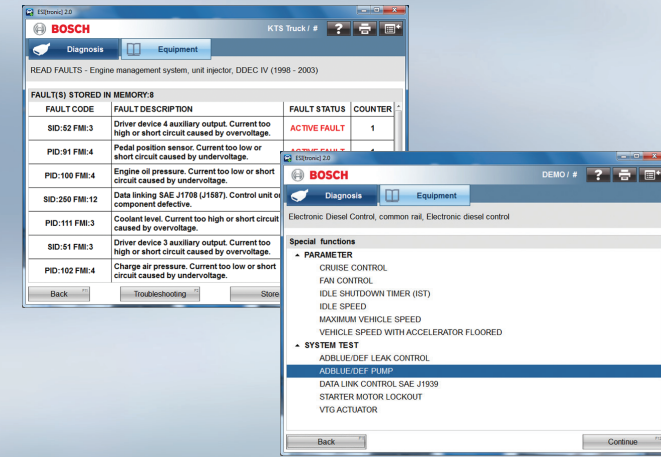
# ESI[truck] 2015/3 Updates



# ESI[truck] Features



# Diagnostics and Troubleshooting



## 2015/3 Updates

- ▶ 16 Pin Mack/Volvo Scan Capability
- ▶ Coverage Updates for
  - Allison
  - Bendix
  - CAT
  - Cummins
  - Detroit Diesel
  - Daimler / Freightliner
  - Eaton
  - Mack
  - Meritor Wabco
  - Navistar
  - Paccar
  - Volvo

## Bi-Directional Control

- ▶ Read & clear fault codes
- ▶ Data stream
- ▶ Setting/parameter adjustments
- ▶ Component actuations
- ▶ Key system tests

## Repair Information

- ▶ Repair tips and possible causes
- ▶ Wiring diagrams
- ▶ Component location pictures & diagrams

## Create Reports & Store Data

- ▶ Report generator creates summary of fault and diagnostic information with VIN details
- ▶ Stores data for future reference

## Heavy Duty VCI/VDA

- ▶ RP1210 compatible
- ▶ Wired connection or Bluetooth wireless

## Diagnose Fast

- ▶ Scan Fault Codes
- ▶ Step by step trouble shooting
- ▶ Component actuations
- ▶ Key system tests
- ▶ Set parameters

## Diagnose it all – Supports all truck Protocols

- ▶ SAE J1708
- ▶ SAE J1939
- ▶ ISO 914-2, KLine
- ▶ HSCAN & MSCAN
- ▶ RP1210 compatible

*Scan Heavy Duty, Medium Duty and Light Duty trucks*