

## WBE 4110

Standard Digital Wheel Balancer  
1694100204810



**BOSCH**

Invented for life



### Efficient compact wheel balancer designed for passenger cars, motorcycles and light trucks

#### Designed for:

- ▶ Shop Type: General service
- ▶ Usage: Medium volume tire service

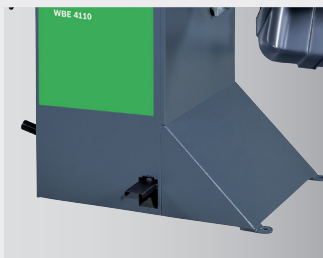
#### Product Summary:

- ▶ Inner arm records diameter and distance (2D) of inner weight location
- ▶ Digital display wheel balancer
- ▶ Superior Bosch balancing program accuracy to balance it right the first time every time!
- ▶ Extended shaft for larger wheel coverage
- ▶ Small footprint with low profile hood maximizes floor space
- ▶ Great value with included high performance mounting accessories

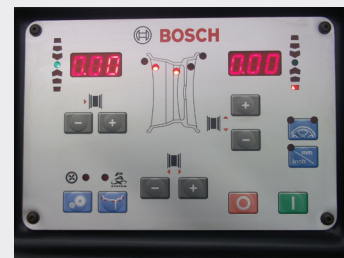
### Features



Convenient cone storage and weight tray on top of balancer.



Positioning pedal locks the shaft to eliminate accidental tire roll while applying weights.



Easy to read LED display for simple and intuitive operation



**Features:**

- ▶ 2D Automatic Data Entry (distance and diameter)
  - Faster setup time!
- ▶ Multiple Balancing Programs and Weight Placement Options
  - Sure to find an option to meet your needs!
- ▶ Split Weight Program
  - Easily hides weights behind wheel spikes
- ▶ Small Footprint
  - Maximize your floor space!
- ▶ Manual Positioning Pedal
  - Locks wheel in place for accurate weight placement!
- ▶ Extended Shaft
  - Allows the use of flange plates to service a greater variety of wheels

Standard adapter group includes quick mounting nut, a 5 low-taper cone set (1.73" - 5.18"), and distance ring and spacer.



**Includes:**

**Extended centering flange 40mm x 4mm:**

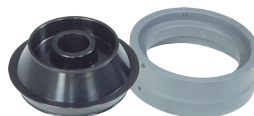
- 510480:** Quick nut 4 mm
- 19020175:** Balancing cone (1.65"-2.54")
- 19020176:** Balancing cone (2.12"-3.13")
- 19020177:** Balancing cone (2.95"-4.39")
- 1695653449:** Light truck cone (3.5"-5.2")
- 1695655316:** Light truck spacer
- 1695655839:** High Taper Truck Cone
- 1695629400:** Manual vernier caliper
- 1695606500:** Weight pliers
- 1695652870:** Width caliper
- 1695654377:** Calibration weight
- 1655616500000:** 4" Pressure Cup

**Specifications:**

- ▶ Rim width capacity 2"-20"
- ▶ Rim diameter capacity 6"-40" manual, 8"-26" automatic
- ▶ Max wheel diameter 32.5"
- ▶ Max wheel weight 143 lbs
- ▶ Footprint (width x depth x height): 51" x 39" x 53" (with wheel cover closed)
- ▶ Power: 110V 60 Hz
- ▶ Warranty (1 yr. parts/3 yrs. motor/6 mo. labor)

**Optional Accessories:**

- 19020135:** 7 piece low taper cone set (42-131 mm)
- 19020175:** Balancing cone (1.73"-2.54")
- 19020176:** Balancing cone (2.12"-3.13")
- 19020177:** Balancing cone (2.95"-4.39")
- 1695653449:** Light truck cone (3.5"-5.2")
- 1695655316:** Metal distance ring
- 1695654895:** Polyamide spacer (40 mm)
- 19020139:** Ford and GM centering collet
- 1695606200:** Nylon double sided spacer
- 1695606300:** Double sided light truck cone (4.72"-6.77")
- SM606500:** Light truck double sided cone and nylon spacer kit
- 1695654849:** Light truck cone set and spacer disc
- 1695653420:** three arm flange for light trucks
- 1695653888:** Large diameter quick nut cup
- 1695624800:** Small diameter rubber cup
- 169940000335E:** Lug-Centric quick plate kit – Includes 4,5,8 Lug quick plates, quick tips and adaptor tree
- 169900820535E:** Adaptor storage tree
- 169900091935E:** 4 piece fixed flange plate kit
- 1695654039:** Basic motorcycle wheel centering kit
- 1695654060:** Motorbike wheels centering kit and 19 mm shaft
- 1695655885:** Electronic rim width measuring arm

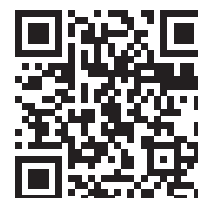


**Recommend Adapter:**

SM606500 Light truck double sided cone and nylon spacer kit (4.72"-6.85")



**169940011035E:** 9 piece low taper collet set (2.07"-4.76.")



Scan here for more information on the WBE 4110