

WBE 4400

Video Wheel Balancer
1694100287810



BOSCH

Invented for life



1694100287810 WBE 4400 Video Wheel Balancer

Use as the primary or as a secondary balancer in a high to mid-volume shop.

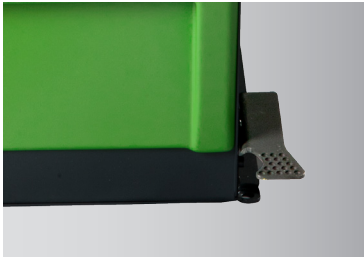
- ▶ New ergonomic design, better access inside the wheel, improved working position and more comfort for the user
- ▶ Wheel balancer for passenger car, light industrial vehicle and motorbike wheels (with optional accessories)
- ▶ 19" TFT monitor, simple and intuitive control panel for greater functionality
- ▶ 11 passenger car, and 5 motorcycle wheel balancing programs
- ▶ Spoke/hidden weight program
- ▶ Weight Optimization Program (Match Mount)
- ▶ Multi-operator software
- ▶ **EASY-FIX** Positioning System automatically measures diameter and distance (2D), and ensures accurate stick weight placement every time
- ▶ Ability to apply the weight manually in three positions: 12/3/6
- ▶ **ADF (Automatic Detection Function)** for weight positioning
- ▶ Self-diagnostic and self-calibration function
- ▶ Optional external arm provides automatic entry of wheel width measurement
- ▶ Includes quick clamp wing-nut, standard (5) cone passenger car and small light truck cone, and distance spacer

Specifications

Max. shaft weight	154 lbs.
Max. tire diameter	47.25"
Max. wheel width	20"
Rim diameter	10"-26"/6"-40" Manually
Rim width	1"-20"/21"-24" Manually
Measuring time	8 sec. (6Jx15)
Power	110V 60Hz 1Ph



WBE 4400 Key Features



Positioning pedal locks the balancer's shaft to eliminate tire roll while applying weights



Tactile keypad navigation for easy menu selection



Standard fitting monitor and connections; easy for upgrades or retrofitting

Standard Accessories



Scope of Delivery

Electronic wheel balancer with 19" TFT monitor, positioning pedal, centering flange with quicknut, internal electronic measuring arm enters distance and diameter, 5 centering cones, distance spacer, calibration weight, weight pliers.

Software Language

- ▶ **English**
- ▶ **Spanish**
- ▶ Italian
- ▶ **French**
- ▶ Bulgarian
- ▶ Croatian
- ▶ Czech
- ▶ Danish
- ▶ Dutch
- ▶ Finnish
- ▶ German
- ▶ Hungarian
- ▶ Icelandic
- ▶ Israeli
- ▶ Japanese
- ▶ Lithuanian
- ▶ Persian
- ▶ Polish
- ▶ Portuguese
- ▶ Russian
- ▶ Serbian
- ▶ Slovak
- ▶ Slovenian
- ▶ Swedish
- ▶ Turkish

Optional Accessories:

- 169940011035E:** 9 piece low taper collet set (2.07"-4.76.")
- 19020175:** Balancing cone (1.65"-2.54")
- 19020176:** Balancing cone (2.12"-3.13")
- 19020177:** Balancing cone (2.95"-4.39")
- 1695653449:** Light truck cone (3.5"-5.2")
- 1695655316:** Metal distance ring
- 1695654895:** Polyamide spacer (Required with 1695655316 Metal distance ring)
- 19020139:** Ford and GM centering collet
- 1695606200:** Nylon double sided spacer
- 1695606300:** Double sided light truck cone (4.72"-6.77")
- SM606500:** Light truck double sided cone and nylon spacer kit
- 1695654849:** Light truck cone set and spacer disc
- 1695653420:** three arm flange for light trucks
- 1695653888:** Large diameter quick nut cup
- 1695624800:** Small diameter rubber cup
- 169940000335E:** Lug-Centric quick plate kit – Includes 4,5,8 Lug quick plates, quick tips and adaptor tree
- 169900820535E:** Adaptor storage tree
- 169900091935E:** 4 piece fixed flange plate kit
- 1695654039:** Basic motorcycle wheel centering kit
- 1695654060:** Motorbike wheels centering kit and 19 mm shaft

Recommend Adapter:



1695656721: Electronic rim width measurement arm



SM606500: Light truck double sided cone and nylon spacer kit (4.72"-6.85")



169940011035E: 9 piece low taper collet set (2.07"-4.76.")