

HEAVY-DUTY POWERTRAIN STANDS AND ADAPTERS



6000 LB. REVOLVER® DIESEL ENGINE STAND

1750A – Revolver diesel engine stand with 205061 universal engine adapter assembly

1750 – Revolver diesel engine stand without universal engine adapter assembly

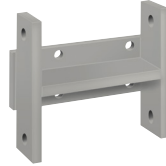
- 96:1 ratio worm gear set rotates components 360°, handle locks in any position
- Integrated 12-ton jack raises and lowers smoothly to position work
- Large front wheels and rear casters for mobility, positioning
- Built for decades of service and covered by OTC's lifetime warranty



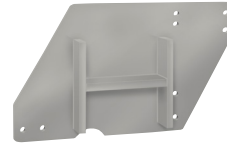
217687 *
Caterpillar



205060 *
Caterpillar



218098
Cummins



218099 *
Cummins



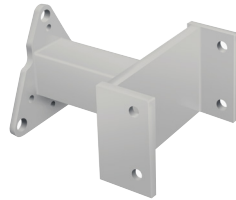
61405 *
Cummins



205059 *
Cummins



61373 *
Allison



208160 *
Allison



1750-35926
Allison



205061
Universal



J-29109-J
Kent-Moore

Caterpillar, Cummins, Allison and generic adapters

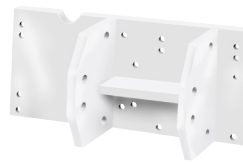
Item	Description	Application	Brand	Component	Requires use of 205061 plate*
217687	Caterpillar engine adapter plate	3114, 3116, and 3176 in-line 6 cylinder and C12	Caterpillar	Engine	Yes
205060	Caterpillar engine adapter plate	1673, 1674, 1693, 3306, & 3406 in-line 6 cyl.; Nos. 1100, 3208, and 3408 V8	Caterpillar	Engine	Yes
218098	Cummins B series adapter plate	"B" series 5.9L in-line 6 cyl. engines	Cummins	Engine	No
218099	Cummins C series adapter plate	"C" series 8.3L in-line 6 cylinder engines	Cummins	Engine	Yes
61405	Cummins L-10, M11 engine adapter plate	L-10 and M11 series engines. Plate attaches to the left side of engine for complete tear down	Cummins	Engine	Yes
205059	Cummins engine adapter plate	All NH, NTC, NTE, N14 855 series in-line 6 cyl; 378 series V6; 504, 555, & 903 series V8; KT 1150 series in-line 6 cyl., L10	Cummins	Engine	Yes
61373	Allison transmission adapter plate	HT-750, CLBT, HT-740D, CR/DR, HT-750CT	Detroit Allison	Transmission	Yes
208160	Allison transmission adapter plate	AT500, MT600, MT 6-speed, VH, VS and V730	Detroit Allison	Transmission	Yes
1750-35926	Allison transmission adapter plate	Allison 3000 series transmissions	Detroit Allison	Transmission	No
1750-41445	Allison transmission adapter plate	Allison 4000 series transmissions; requires pairing with 1750-35926	Detroit Allison	Transmission	No
205061	Engine mounting plate	Universal adapter plate, included with 1750A. Must be used with most adapter plates	Generic engine plates	Generic	N/A - Adapter included with 1750A
J-29109-J	Kent-Moore stand adapter plate	Adapter plate to use adapters for Kent-Moore engine stand	Generic engine plates	Generic	No



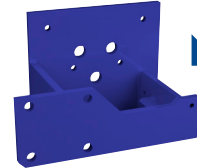
205058 *
Detroit Diesel



218504 *
Detroit Diesel



52871 *
Detroit Diesel



1750-47022
Detroit Diesel

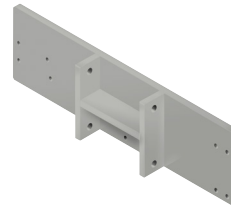
NEW



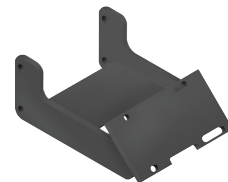
61681 *
Ford



206386 *
International Harvester / Ford



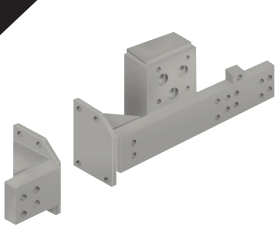
528856 *
International Harvester



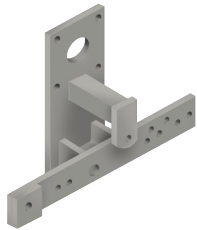
528868 *
International Harvester

Detroit Diesel, Ford and International Harvester adapters

Item	Description	Application	Brand	Component	Requires use of 205061 plate*
205058	Detroit Diesel Series 53, Series 71, Series 92 engine adapter plate	53 series inline 6, 6V and 8V; 71 series inline 6, 6V, 8V and 12V; 92 series 6V and 8V, 8.2-liter V8	Detroit Diesel	Engine	Yes
218504	Detroit Diesel Series 60 adapter plate	Series 60 inline 6-cylinder engines	Detroit Diesel	Engine	Yes
52871	Detroit Diesel Series 71 engine adapter plate	Coach 6V and 8V series 71 Detroit Diesel	Detroit Diesel	Engine	Yes
1750-47022	Detroit Diesel MBE 900 engine adapter plate	Detroit Diesel 2004 - 2007 MBE 900 engines	Detroit Diesel	Engine	No
61681	Ford 6.6L / 7.8L engine adapter mounting plate	Ford 6.6L/7.8L engines	Ford	Engine	Yes
206386	International Harvester / Ford engine adapter mounting plate	DT-466, DT-360, DT408, and 530 in-line 6 cylinder; DV-550, MV-404, MV-446, V304, V345, V392, 4-152, 4-196, 4-194; 9.0 liter and T444E V8; and Ford 6.9L, and 7.3L DIT	International Harvester / Ford	Engine	Yes
528856	International Harvester 300 & 400 series	IH300 & 400 Series	International Harvester	Engine	Yes
528868	International Harvester VT365 engine adapter mounting plate	International VT365	International Harvester	Engine	Yes



528859 *
John Deere



528861 *
John Deere



528863 *
John Deere

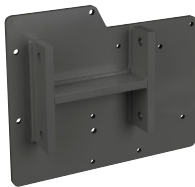


206629 *
Mack



205101 *
Mack

NEW



1750-4940 *
Navistar / IH

NEW



1750-4649 *
Navistar / IH

NEW



1750-4789 *
Navistar



528853 *
Volvo

John Deere, Mack, Navistar and Volvo adapters

Item	Description	Application	Brand	Component	Requires use of 205061 plate*
528859	John Deere 400/500 series adapter	JD 400 and 500 engines	John Deere	Engine	Yes
528861	John Deere 4.5/6.8 adapter plate	JD Powertech 4.5L & 6.8L	John Deere	Engine	Yes
528863	John Deere 8995 V6 adapter plate	JD 8995 V6, must be used with 528859 400/500 series engine adapter	John Deere	Engine	Yes
206629	Mack engine adapter mounting plate	V8 1000, E6, & E7 in-line 6 cyl	Mack	Engine	Yes
205101	Mack engine adapter mounting plate	All 672, 673, 675, & 711 series in-line 6 cyl	Mack	Engine	Yes
528993	Mack engine adapter mounting plate	865, 868	Mack	Engine	Yes
1750-4940	Navistar / IH MaxxForce engine adapter plate	2010 - 2016 Navistar MaxxForce DT, MaxxForce 9, MaxxForce 10 engines	Navistar / International Harvester	Engine	Yes
1750-4649	Navistar / IH MaxxForce engine adapter plate	2004 - 2009 International Harvester DT466, DT570, HT570; Navistar MaxxForce DT, MaxxForce 9, MaxxForce 10 engines	Navistar / International Harvester	Engine	Yes
1750-4789	Navistar MaxxForce engine adapter plate	2007 - later MaxxForce 11, MaxxForce 13 engines	Navistar	Engine	Yes
528853	Volvo TD67 / TD71 engine adapter plate	TD67 and TD71 engines	Volvo	Engine	Yes