

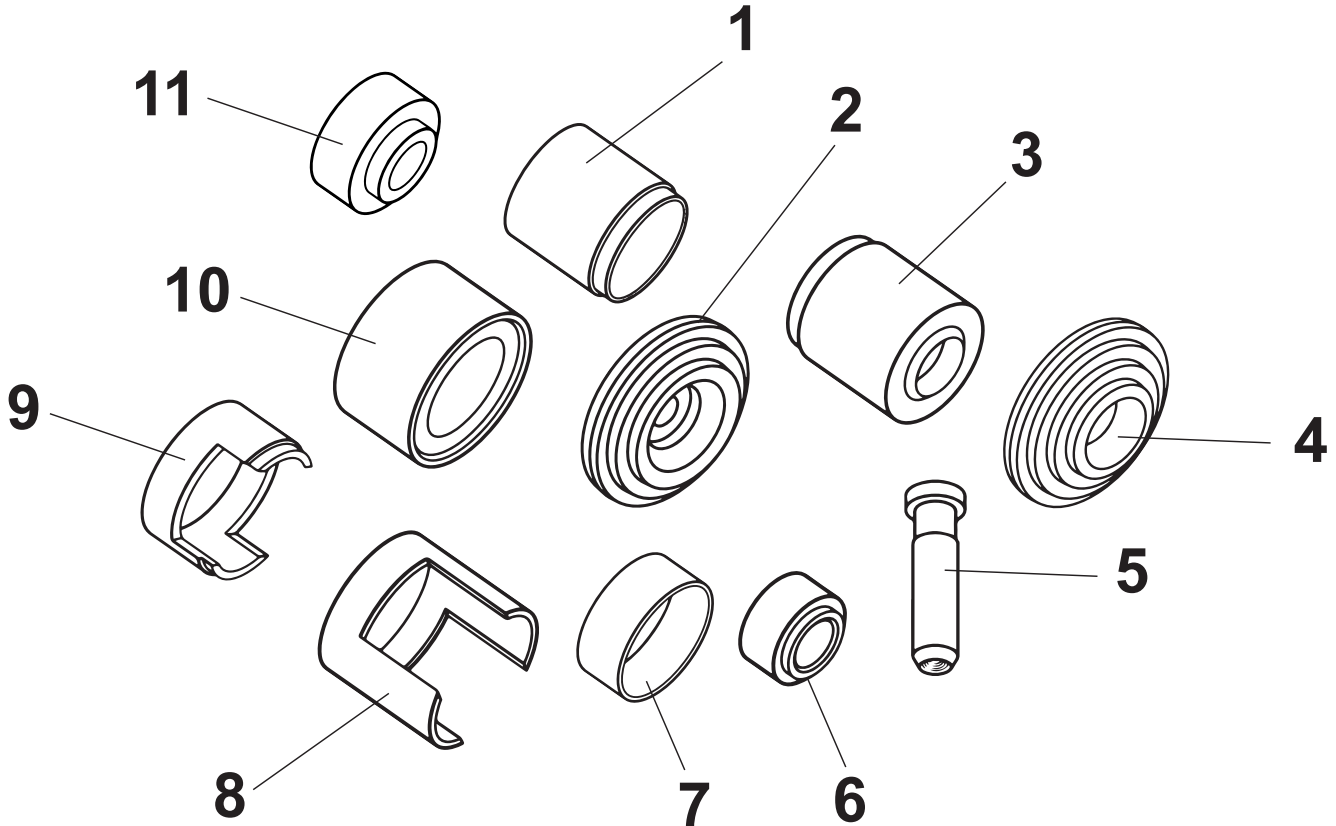


655 Eisenhower Drive
Owatonna, MN 55060 USA
Phone: (507) 455-7000
Tech. Serv.: (800) 533-6127
Fax: (800) 955-8329
Order Entry: (800) 533-6127
Fax: (800) 283-8665
International Sales: (507) 455-7223
Fax: (507) 455-7063

Form No. 555189

Parts List for: 6529-1

BMW Ball Joint Adapter Kit



Item No.	Part No.	Description
1	554413	Adapter
2	305228	Adapter
3	38354	Adapter
4	305227	Adapter
5	314392	Plug
6	313968	Adapter
7	554422	Adapter
8	554581	Adapter
9	554582	Adapter
10	554417	Adapter
11	554613	Adapter

BMW

Model	Year	Type	Position	Location	Removal Adapters	Installation Adapters	Page
318 (E36 platform)	before 1999	Car	Lower	Front Inner	313968, 554413	305227, 554417, 554422	3
318 (E36 platform)	before 1999	Car	Lower	Front Outer	305228, 554581, 554613	38354, 305228, 554582	4
323 (E36 platform)	before 1999	Car	Lower	Front Inner	313968, 554413	305227, 554417, 554422	3
323 (E36 platform)	before 1999	Car	Lower	Front Outer	305228, 554581, 554613	38354, 305228, 554582	4
328 (E36 platform)	before 1999	Car	Lower	Front Inner	313968, 554413	305227, 554417, 554422	3
328 (E36 platform)	before 1999	Car	Lower	Front Outer	305228, 554581, 554613	38354, 305228, 554582	4
M3 (E36 platform)	before 1999	Car	Lower	Front Inner	313968, 554413	305227, 554417, 554422	3
M3 (E36 platform)	before 1999	Car	Lower	Front Outer	305228, 554581, 554613	38354, 305228, 554582	4

Explanation of Safety Signal Words



WARNING: Indicates a potentially hazardous situation which, if not avoided, could result in death or serious injury.



CAUTION: Indicates a potentially hazardous situation which, if not avoided, may result in minor or moderate injury.

CAUTION: Used without the safety alert symbol indicates a potentially hazardous situation which, if not avoided, may result in property damage.

Notes: Provide clarity and helpful information.

Safety Precautions



CAUTION: To prevent personal injury,



- Wear protective eyewear that meets the requirements of ANSI Z87.1 and OSHA.



- Before performing any repairs on a vehicle, block all wheels to prevent movement.

- Check the final alignment of tooling and components before using the C-frame press to exert pressure.

Ball Joint: Lower Front Inner

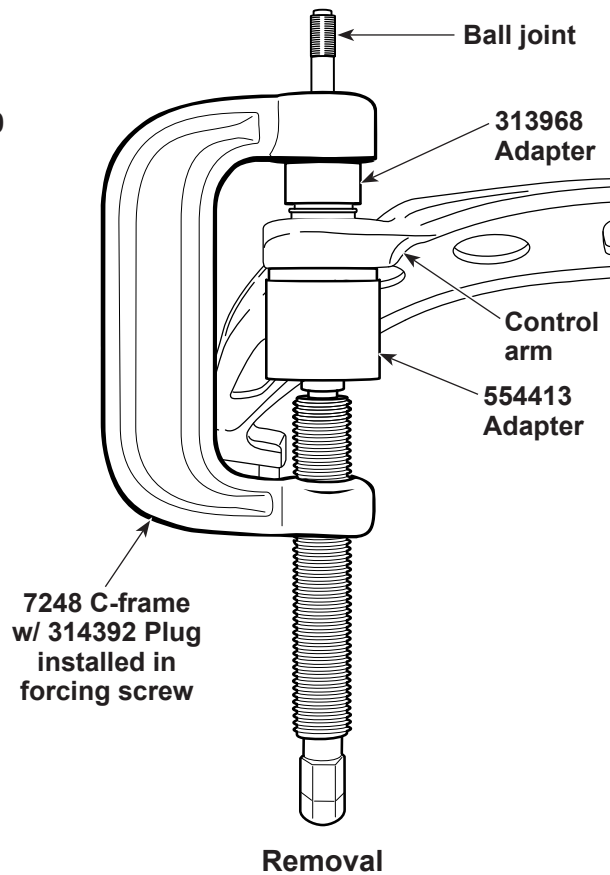
Application

BMW 3 Series: 318, 323, 328, & M3 – before 1999
(E36 Platform)

Note: Remove live center plug from C-frame forcing screw; replace it with 314392 plug supplied with this kit.

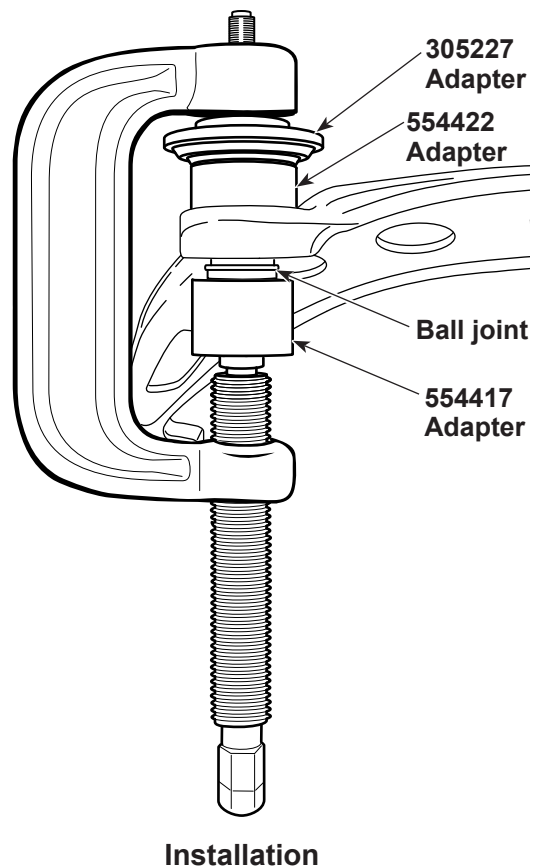
Removal

1. Remove dust boot.
2. Position components as shown.
3. Turn forcing screw until plug meets ball joint or adapter. Check alignment of all components.
4. Tighten forcing screw until ball joint is removed.



Installation

1. Clean ball joint bore in control arm.
2. Insert new ball joint as straight as possible into control arm.
3. Position components as shown.
4. Turn forcing screw until plug meets ball joint or adapter. Check alignment of all components.
5. Tighten forcing screw until ball joint is firmly seated.
6. Install dust boot.



Ball Joint: Lower Front Outer

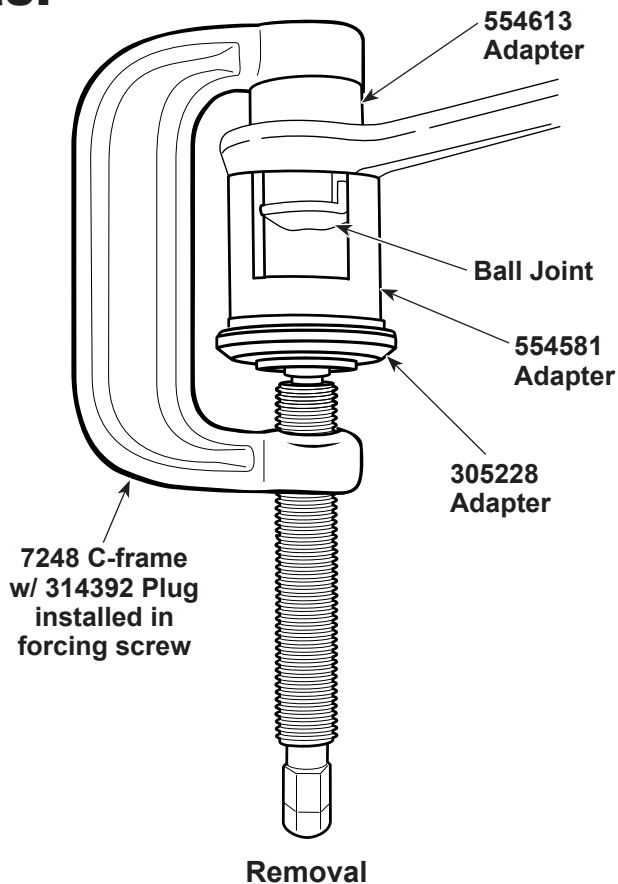
Application

BMW 3 Series: 318, 323, 328, & M3 – before 1999
(E36 Platform)

Note: Remove live center plug from C-frame forcing screw; replace it with 314392 plug supplied with this kit.

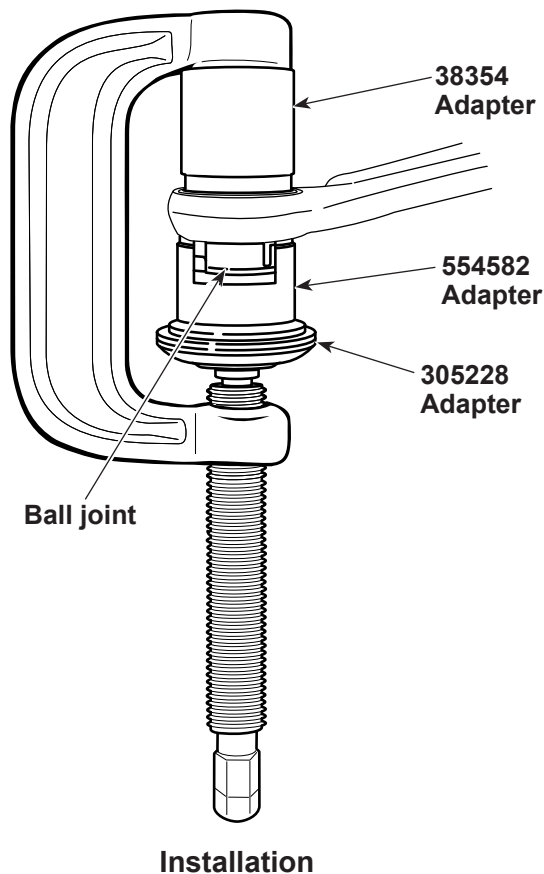
Removal

1. Remove dust boot.
2. Position components as shown.
3. Turn forcing screw until plug meets ball joint or adapter. Check alignment of all components.
4. Tighten forcing screw until ball joint is removed.



Installation

1. Clean ball joint bore in control arm.
2. Insert new ball joint as straight as possible into control arm.
3. Position components as shown.
4. Turn forcing screw until plug meets ball joint or adapter. Check alignment of all components.
5. Tighten forcing screw until ball joint is firmly seated.
6. Install dust boot.



U-Joint Service

The C-frame included in this kit also may be used to service U-joints on most cars and light trucks – either on or off vehicle.

Note: This application uses the standard plug (29501) shipped with the forcing screw, not the 314392.

Disassembly

1. Remove external / internal lock rings.
2. Position C-frame around driveshaft yoke, and tighten forcing screw until first bearing is removed.
3. Position C-frame on second bearing, and tighten forcing screw until second bearing is removed.

Assembly

1. Clean dirt and oil from yoke area.
2. Align C-frame and new bearing as straight as possible over yoke.
3. Press new bearing into yoke, and install lock rings.
4. Position C-frame and second bearing as straight as possible over yoke.
5. Press new bearing into yoke, and install lock rings.

