



655 Eisenhower Drive  
 Owatonna, MN 55060 USA  
 Phone: (507) 455-7000  
 Tech. Serv.: (800) 533-6127  
 Fax: (800) 955-8329  
 Order Entry: (800) 533-6127  
 Fax: (800) 283-8665  
 International Sales: (507) 455-7223  
 Fax: (507) 455-7063  
 Website: www.otctools.com

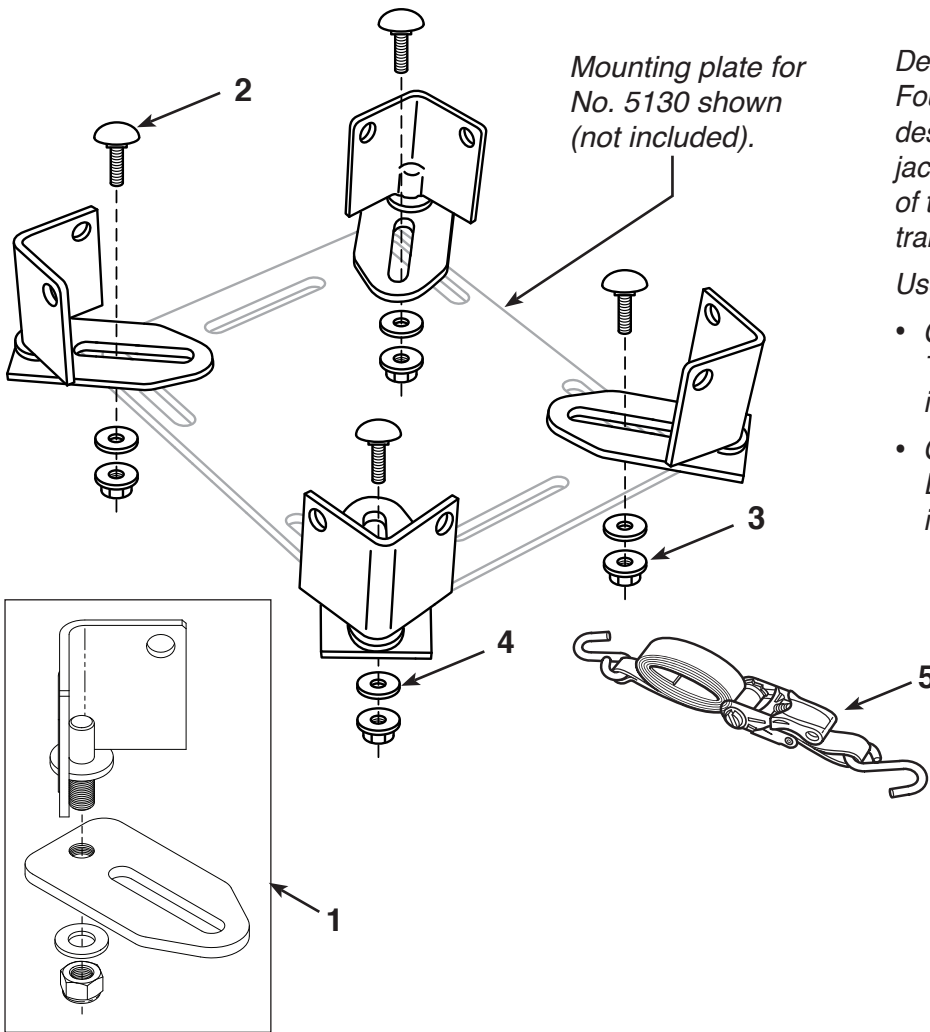
Form No. 561957

**Parts List &  
 Operating Instructions**  
 for:

**561949**

**Light-Duty Transmission Adapters**

Maximum Capacity: 454 kg (1000 lbs.)



*Description:*  
 Four universal mounting adapters designed to be used on a transmission jack mounting plate for the purpose of transporting and repairing vehicle transmissions.

*Use with:*

- OTC No. 5019A, 5078, or 1522A Transmission Jack for removal and installation of differential assemblies.
- OTC No. 5130 DriveMaster™ Driveline Lift for removal and installation of driveline components.

**Parts List**

Item No.	Part No.	No. Req'd	Description
1	<b>561947</b>	1	Transmission Adapter Assembly (consists of adapter, flat washer, hex nut)

**Repair Kit No. 569966**

Item No.	Qty.	Description
2	4	Carriage Bolt — 1/2-13 x 30.48 mm (1.25 in.)
3	4	Flange Nut — 1/2-13 thread
4	4	Washer — plain, type "A"
5	1	Ratchet Strap — 4 ft. (122 cm)

This document contains product parts lists, and information regarding operation and maintenance. Items listed in the parts list have been carefully tested and selected by OTC. Therefore: Use only OTC replacement parts.

Get parts at OTC  
 parts.com.



Product questions can be directed to the OTC Technical Service Department at (800) 533-6127.

## Explanation of Safety Signal Words

The safety signal word designates the degree or level of hazard seriousness.



**DANGER:** Indicates an imminently hazardous situation which, if not avoided, will result in death or serious injury.



**WARNING:** Indicates a potentially hazardous situation which, if not avoided, could result in death or serious injury.



**CAUTION:** Indicates a potentially hazardous situation which, if not avoided, may result in minor or moderate injury.

**CAUTION:** Used without the safety alert symbol indicates a potentially hazardous situation which, if not avoided, may result in property damage.

## Safety Precautions



**CAUTION:** To prevent personal injury and/ or property damage,



- Study, understand, and follow all safety precautions and operating instructions before using these transmission adapters. If the operator cannot read instructions, operating instructions and safety precautions must be read and discussed in the operator's native language.



- Only qualified operators may install, operate, adjust, maintain, clean, repair, inspect, or transport these transmission adapters.
- Wear eye protection that meets ANSI Z87.1 and OSHA standards.
- Do not exceed the rated capacity of these transmission adapters as stated in this document and on the warning decal.



- These adapters are designed to work together in a group of four. Using fewer than four adapters in a setup could result in personal injury caused by the load tipping or falling.
- Do not use these transmission adapters for anything other than their intended purpose.
- Use the ratchet strap included to secure the load to the transmission jack.
- No alteration shall be made to this product.
- Inspect the condition of the transmission adapters before each use; do not use if damaged, altered, or in poor condition.
- Use only those repair parts called out in the parts list in this document. Items found in the parts list have been carefully tested and selected by OTC. Obtain replacement parts at [OTCparts.com](http://OTCparts.com).

## Operating Instructions

1. Install the transmission adapters on the transmission jack mounting plate using the carriage bolts, washers, and flange nuts provided. Hand tighten the flange nuts. See Figure 1.
2. Raise the arm of the jack up to the transmission.
3. Adjust the transmission adapters as needed to fit the transmission. Tighten the flange nuts.
4. Use ratchet strap to secure the transmission to the transmission jack as shown in Figure 2. Attach the hooks on the end of the ratchet strap to the slots provided in the mounting plate, the top holes in the transmission adapters, or other suitable locations.

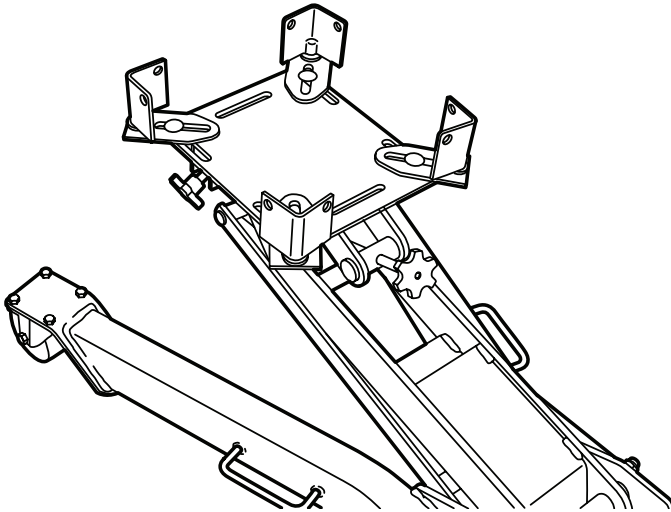


Figure 1

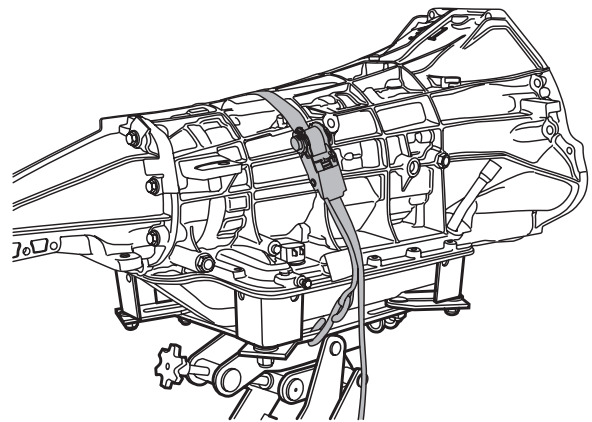


Figure 2

## Inspection and Maintenance



**CAUTION:** To prevent personal injury,

- Only qualified personnel shall perform inspections and repairs to these transmission adapters.
- Before each use, an approved inspector must inspect the transmission adapters for bends, cracks, dents, elongated holes, or missing hardware. If damage is found, discontinue use.
- Use only those repair parts called out in the parts list in this document. Items found in the parts list have been carefully tested and selected by OTC. Order replacement parts from [OTCparts.com](http://OTCparts.com).