



**BOSCH**

OCL 8850

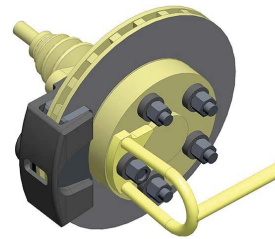
## OCL8850 Quick Reference Guide



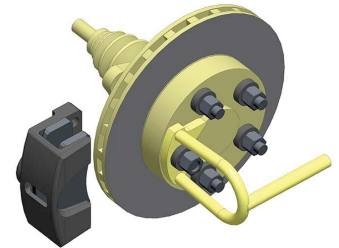
Check wheel bearing.



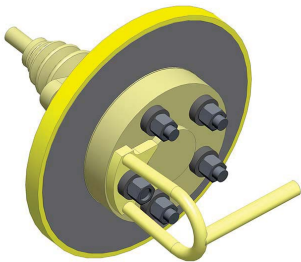
**Note: Rotor must remain in place on hub at all times.**  
Remove wheel.



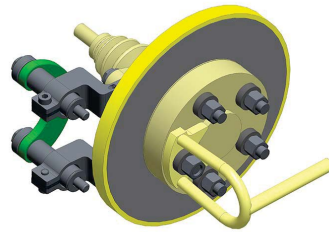
Fix all bolts/nuts and drive adapter 50 Nm (37 ft-lb).



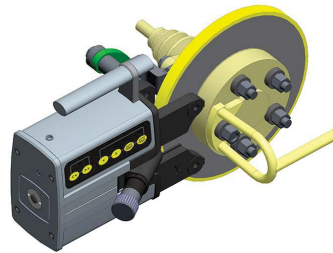
Remove caliper and clean mounting surfaces.



Fit rubber silencer.



Fit adapter; bolts M10 or larger [50 Nm (37 ft-lb)].

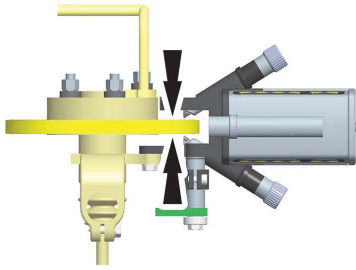


Fit lathe [50 Nm (37 ft-lb)], place drive unit, and machine rotor.

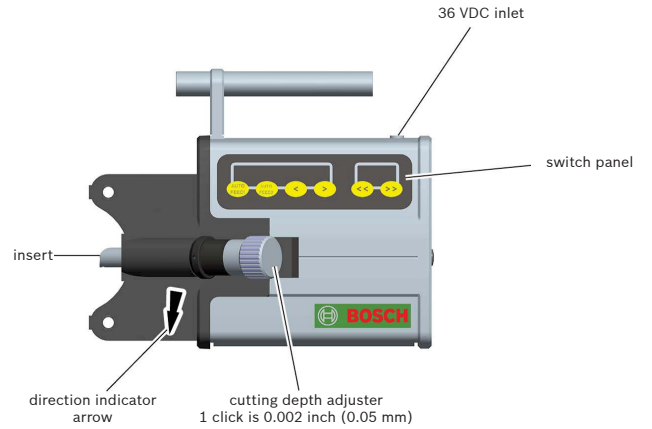
Read and follow the instruction manual before assembling, installing, operating, or servicing the equipment.

577365 REV A

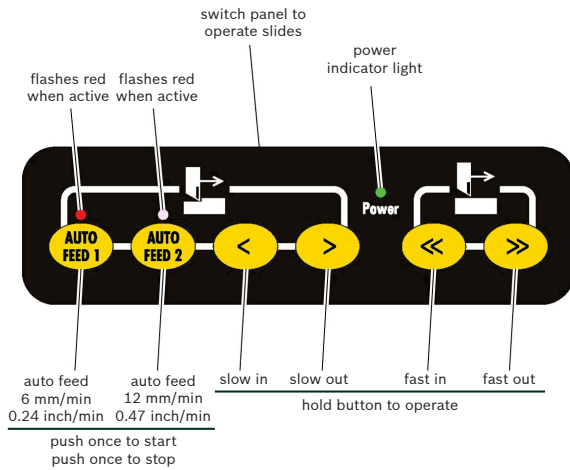
## Aligned



## Lathe



## Left Switch Panel (right panel is mirrored)



## Drive Unit

