

# WBE 4200 S30

LED Wheel Balancer  
1694100286810



# BOSCH

Invented for life



### Use as the primary or as a secondary balancer in a high to mid-volume shop.

- ▶ New ergonomic design, better access inside the wheel, improved working position and more comfort for the user
- ▶ Wheel balancer for passenger car, light industrial vehicle and motorbike wheels (with optional accessories)
- ▶ Easy to read LED display
- ▶ 11 passenger car, and 5 motorcycle wheel balancing programs
- ▶ Spoke/hidden weight program
- ▶ Weight Optimization Program (Match Mount)
- ▶ Multi-operator software
- ▶ **EASY-FIX** Positioning System automatically measures diameter and distance (2D), and ensures accurate stick weight placement every time
- ▶ **ADF (Automatic Detection Function)** for weight positioning
- ▶ Optional external arm provides automatic entry of wheel width measurement
- ▶ Includes quick clamp wing-nut, standard (5) cone passenger car and small light truck cone, and distance spacer

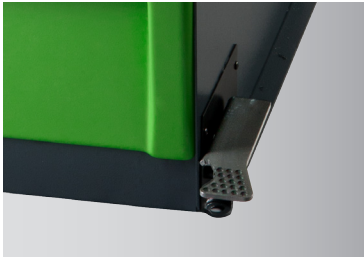
1694100286810 WBE 4200 LED Wheel Balancer

### Specifications

Max. shaft weight	154 lbs.
Max. tire diameter	47.25"
Max. wheel width	20"
Rim diameter	10"-26"/6"-40" Manually
Rim width	1"-20"/21"-24" Manually
Measuring time	8 sec. (6Jx15)
Power	110V 60Hz



**WBE 4200 Key Features**



Positioning pedal locks the balancer's shaft to eliminate tire roll while applying weights



Easy to read LED display

**Standard accessories**



**Scope of Delivery:**

- ▶ Electronic wheel balancer with LED display
- ▶ Positioning pedal
- ▶ Centering flange with quicknut
- ▶ Internal electronic measuring arm enters distance and diameter
- ▶ 5 centering cones
- ▶ Distance spacer
- ▶ Calibration weight
- ▶ Weight pliers
- ▶ Manual vernier calliper
- ▶ Compass
- ▶ Weight scraper
- ▶ Rubber cup

**Optional Accessories**

**1 695 656 721:** Electronic rim width measurement arm



**SM606500:** LT Truck Centering Kit, Distance Spacer, Double sided LT Cone 4.72" – 6.85"



**SM606200:** Distance Spacer – Two Sided with Shallow and Deep Offset



**19020139:** Centering Collet –LT HD Applications – Must use with SM606200 Spacer



**19020141:** Speed Plate System 4 Lug set



**19020142:** Speed Plate System 5 Lug set



**19020143:** Speed Plate System 6 Lug Set



**510846:** Pro Flange Plate Kit, 4-5-6-8, Lug with Pins – 4-5-6-8 Fixed

